



ELECTRONIC COPY

LG654417967 Report verification at igi.org



October 1, 2024
IGI Report Number LG654417967
Description LABORATORY GROWN DIAMOND
Shape and Cutting Style ROUND BRILLIANT
Measurements 7.26 - 7.31 X 4.28 MM
GRADING RESULTS
Carat Weight 1.40 CARAT
Color Grade D
Clarity Grade INTERNALLY FLAWLESS
Cut Grade EXCELLENT

LABORATORY GROWN DIAMOND REPORT

October 1, 2024
IGI Report Number LG654417967
Description LABORATORY GROWN DIAMOND
Shape and Cutting Style ROUND BRILLIANT
Measurements 7.26 - 7.31 X 4.28 MM

GRADING RESULTS

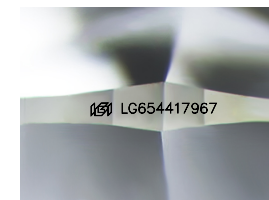
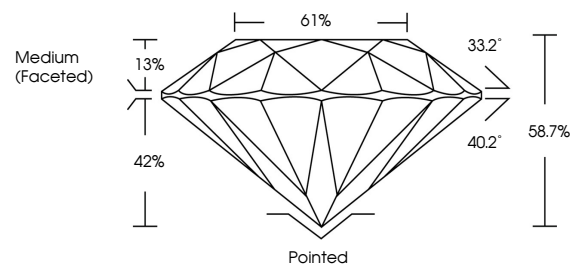
Carat Weight 1.40 CARAT
Color Grade D
Clarity Grade INTERNALLY FLAWLESS
Cut Grade EXCELLENT

ADDITIONAL GRADING INFORMATION

Polish EXCELLENT
Symmetry EXCELLENT
Fluorescence NONE
Inscription(s) IGI LG654417967

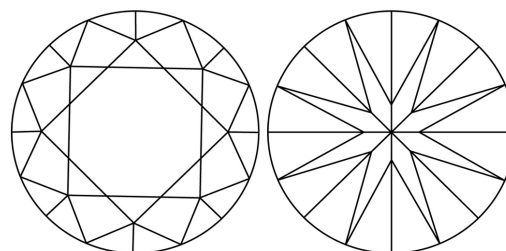
Comments: As Grown - No indication of post-growth treatment. This Laboratory Grown Diamond was created by High Pressure High Temperature (HPHT) growth process. Type II

PROPORTIONS



Sample Image Used

CLARITY CHARACTERISTICS



KEY TO SYMBOLS

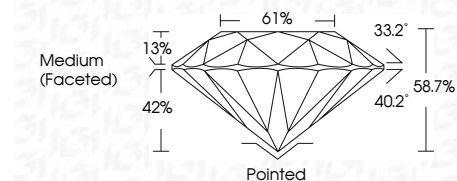
Red symbols indicate internal characteristics. Green symbols indicate external characteristics.

COLOR

D E F G H I J Faint Very Light Light

CLARITY

IF VS 1-2 VS 1-2 SI 1-2 I 1-3
Internally Flawless Very Very Slightly Included Very Slightly Included Slightly Included Included



ADDITIONAL GRADING INFORMATION

Polish EXCELLENT
Symmetry EXCELLENT
Fluorescence NONE
Inscription(s) IGI LG654417967
Comments: As Grown - No indication of post-growth treatment. This Laboratory Grown Diamond was created by High Pressure High Temperature (HPHT) growth process. Type II



Summary table of report details including date, report number, description, measurements, grading results, and additional information.