



ELECTRONIC COPY

LG654419773
Report verification at igi.org



September 30, 2024

IGI Report Number **LG654419773**

Description **LABORATORY GROWN DIAMOND**

Shape and Cutting Style **ROUND BRILLIANT**

Measurements **9.45 - 9.49 X 5.85 MM**

GRADING RESULTS

Carat Weight **3.24 CARATS**

Color Grade **D**

Clarity Grade **VVS 1**

Cut Grade **IDEAL**

September 30, 2024
IGI Report Number **LG654419773**
Description **LABORATORY GROWN DIAMOND**
Shape and Cutting Style **ROUND BRILLIANT**
Measurements **9.45 - 9.49 X 5.85 MM**

GRADING RESULTS

Carat Weight **3.24 CARATS**

Color Grade **D**

Clarity Grade **VVS 1**

Cut Grade **IDEAL**

ADDITIONAL GRADING INFORMATION

Polish **EXCELLENT**

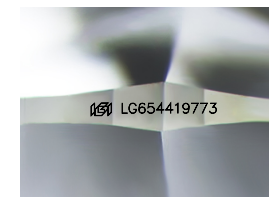
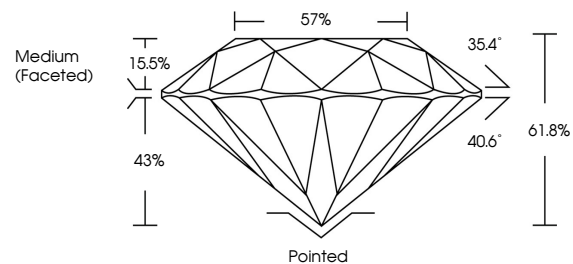
Symmetry **EXCELLENT**

Fluorescence **NONE**

Inscription(s) **LG654419773**

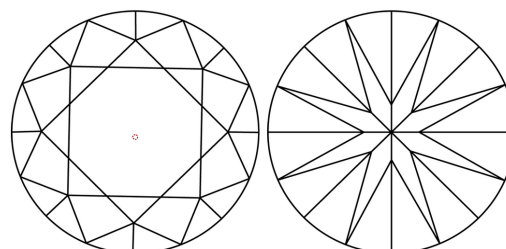
Comments: HEARTS & ARROWS
As Grown - No indication of post-growth treatment.
This Laboratory Grown Diamond was created by High Pressure High Temperature (HPHT) growth process.
Type II

PROPORTIONS



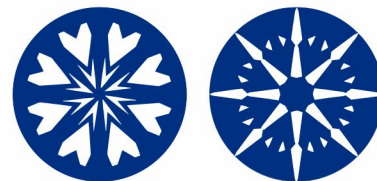
Sample Image Used

CLARITY CHARACTERISTICS



KEY TO SYMBOLS

Red symbols indicate internal characteristics.
Green symbols indicate external characteristics.

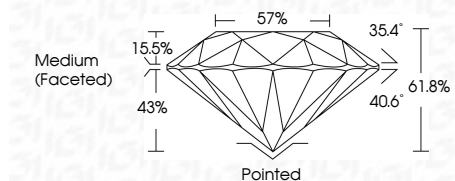


COLOR

D E F G H I J Faint Very Light Light

CLARITY

IF	VVS ¹⁻²	VS ¹⁻²	SI ¹⁻²	I ¹⁻³
Internally Flawless	Very Very Slightly Included	Very Slightly Included	Slightly Included	Included



ADDITIONAL GRADING INFORMATION

Polish **EXCELLENT**

Symmetry **EXCELLENT**

Fluorescence **NONE**

Inscription(s) **LG654419773**

Comments: HEARTS & ARROWS
As Grown - No indication of post-growth treatment.
This Laboratory Grown Diamond was created by High Pressure High Temperature (HPHT) growth process.
Type II



IGI

September 30, 2024	IGI Report No LG654419773	3.24 CARATS	D	Pointed	Medium (Faceted)
ROUND BRILLIANT	9.45 - 9.49 X 5.85 MM	VVS 1	IDEAL	EXCELLENT	NONE
Color Grade	61.8%	40.6%	57%	EXCELLENT	IGI LG654419773
Clarity Grade	57%	35.4%	15.5%	NONE	
Depth					
Table					
Girdle					
Culet					
Polish					
Symmetry					
Fluorescence					
Inscriptions(s)					

Comments: HEARTS & ARROWS
As Grown - No indication of post-growth treatment.
This Laboratory Grown Diamond was created by High Pressure High Temperature (HPHT) growth process.
Type II