



ELECTRONIC COPY

LG654421599
Report verification at igi.org



September 27, 2024
IGI Report Number LG654421599
Description LABORATORY GROWN DIAMOND
Shape and Cutting Style ROUND BRILLIANT
Measurements 8.31 - 8.34 X 4.98 MM
GRADING RESULTS
Carat Weight 2.09 CARATS
Color Grade E
Clarity Grade INTERNALLY FLAWLESS
Cut Grade IDEAL

September 27, 2024
IGI Report Number LG654421599
Description LABORATORY GROWN DIAMOND
Shape and Cutting Style ROUND BRILLIANT
Measurements 8.31 - 8.34 X 4.98 MM

GRADING RESULTS

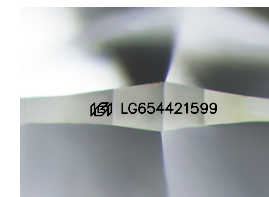
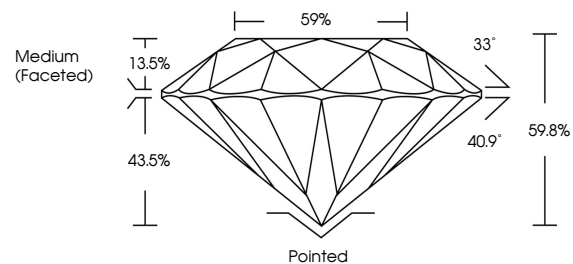
Carat Weight 2.09 CARATS
Color Grade E
Clarity Grade INTERNALLY FLAWLESS
Cut Grade IDEAL

ADDITIONAL GRADING INFORMATION

Polish EXCELLENT
Symmetry EXCELLENT
Fluorescence NONE
Inscription(s) IGI LG654421599

Comments: As Grown - No indication of post-growth treatment.
This Laboratory Grown Diamond was created by High Pressure High Temperature (HPHT) growth process.
Type II

PROPORTIONS



Sample Image Used

CLARITY CHARACTERISTICS



KEY TO SYMBOLS

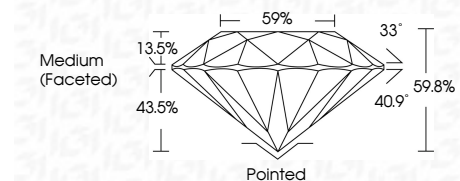
Red symbols indicate internal characteristics.
Green symbols indicate external characteristics.

COLOR

D E F G H I J Faint Very Light Light

CLARITY

IF VS 1-2 VS 1-2 SI 1-2 I 1-3
Internally Flawless Very Very Slightly Included Very Slightly Included Slightly Included Included



ADDITIONAL GRADING INFORMATION

Polish EXCELLENT
Symmetry EXCELLENT
Fluorescence NONE
Inscription(s) IGI LG654421599
Comments: As Grown - No indication of post-growth treatment.
This Laboratory Grown Diamond was created by High Pressure High Temperature (HPHT) growth process.
Type II



IGI



September 27, 2024
IGI Report No. LG654421599
ROUND BRILLIANT
8.31 - 8.34 X 4.98 MM
2.09 CARATS
E
Color Grade
Clarity Grade
Cut Grade
Depth
Table
Girdle
Medium (Faceted)
Pointed
Polish
Symmetry
Fluorescence
Inscriptions(s)
Comments: As Grown - No indication of post-growth treatment. This Laboratory Grown Diamond was created by High Pressure High Temperature (HPHT) growth process. Type II