



ELECTRONIC COPY

LG654432156
Report verification at igi.org



September 30, 2024

IGI Report Number LG654432156

Description LABORATORY GROWN DIAMOND

Shape and Cutting Style ROUND BRILLIANT

Measurements 9.31 - 9.35 X 5.66 MM

GRADING RESULTS

Carat Weight 3.03 CARATS

Color Grade E

Clarity Grade VVS 2

Cut Grade IDEAL

September 30, 2024
IGI Report Number LG654432156
Description LABORATORY GROWN DIAMOND
Shape and Cutting Style ROUND BRILLIANT
Measurements 9.31 - 9.35 X 5.66 MM

GRADING RESULTS

Carat Weight 3.03 CARATS

Color Grade E

Clarity Grade VVS 2

Cut Grade IDEAL

ADDITIONAL GRADING INFORMATION

Polish EXCELLENT

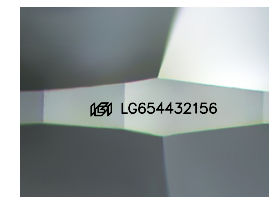
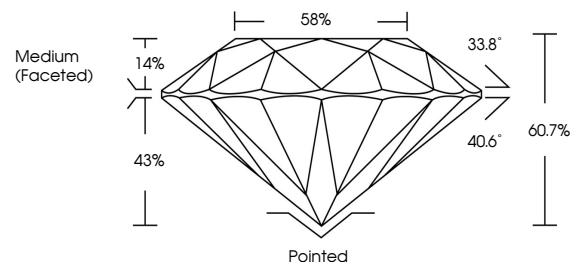
Symmetry EXCELLENT

Fluorescence NONE

Inscription(s) IGI LG654432156

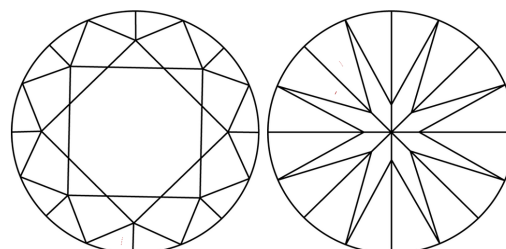
Comments: HEARTS & ARROWS
This Laboratory Grown Diamond was created by Chemical Vapor Deposition (CVD) growth process. Type IIa

PROPORTIONS



Sample Image Used

CLARITY CHARACTERISTICS



KEY TO SYMBOLS

Red symbols indicate internal characteristics.
Green symbols indicate external characteristics.

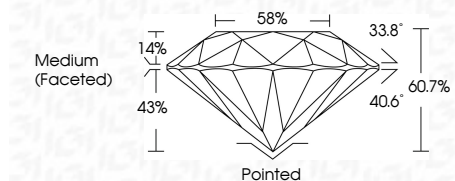


COLOR

D E F G H I J Faint Very Light Light

CLARITY

IF VVS 1-2 VS 1-2 SI 1-2 I 1-3
Internally Flawless Very Very Slightly Included Very Slightly Included Slightly Included Included



ADDITIONAL GRADING INFORMATION

Polish EXCELLENT

Symmetry EXCELLENT

Fluorescence NONE

Inscription(s) IGI LG654432156

Comments: HEARTS & ARROWS
This Laboratory Grown Diamond was created by Chemical Vapor Deposition (CVD) growth process. Type IIa



IGI



Table with 2 columns: Property and Value. Includes: September 30, 2024, IGI Report No LG654432156, ROUND BRILLIANT, 3.03 CARATS, E, VVS 2, IDEAL, 60.7%, 58%, Medium (Faceted), Pointed, EXCELLENT, EXCELLENT, NONE, IGI LG654432156, Comments: HEARTS & ARROWS, This Laboratory Grown Diamond was created by Chemical Vapor Deposition (CVD) growth process. Type IIa