



ELECTRONIC COPY

LG654432213
Report verification at igi.org



October 5, 2024

IGI Report Number **LG654432213**

Description **LABORATORY GROWN DIAMOND**

Shape and Cutting Style **ROUND BRILLIANT**

Measurements **6.40 - 6.45 X 4.07 MM**

GRADING RESULTS

Carat Weight **1.03 CARAT**

Color Grade **FANCY INTENSE PINK**

Clarity Grade **VS 2**

Cut Grade **EXCELLENT**

October 5, 2024
IGI Report Number **LG654432213**
Description **LABORATORY GROWN DIAMOND**
Shape and Cutting Style **ROUND BRILLIANT**
Measurements **6.40 - 6.45 X 4.07 MM**

GRADING RESULTS

Carat Weight **1.03 CARAT**

Color Grade **FANCY INTENSE PINK**

Clarity Grade **VS 2**

Cut Grade **EXCELLENT**

ADDITIONAL GRADING INFORMATION

Polish **EXCELLENT**

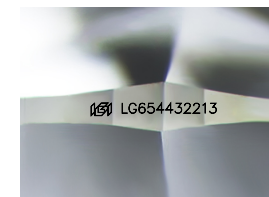
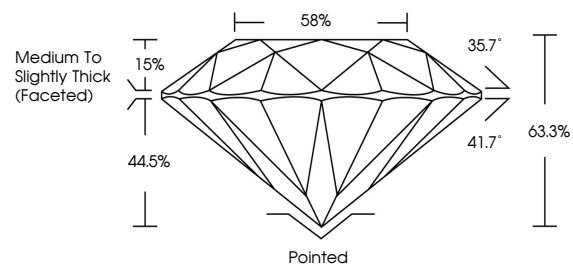
Symmetry **EXCELLENT**

Fluorescence **SLIGHT**

Inscription(s) **LG654432213**

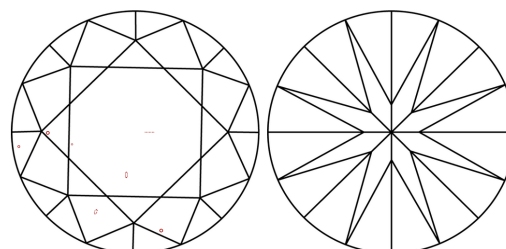
Comments: This Laboratory Grown Diamond was created by Chemical Vapor Deposition (CVD) growth process.
Indications of post-growth treatment.

PROPORTIONS



Sample Image Used

CLARITY CHARACTERISTICS



KEY TO SYMBOLS

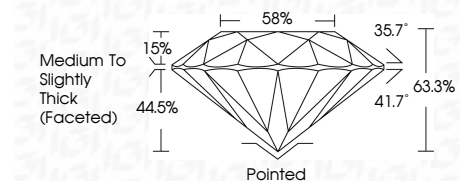
Red symbols indicate internal characteristics.
Green symbols indicate external characteristics.

COLOR

D E F G H I J Faint Very Light Light

CLARITY

IF	VS ¹⁻²	VS ¹⁻²	SI ¹⁻²	I ¹⁻³
Internally Flawless	Very Very Slightly Included	Very Slightly Included	Slightly Included	Included



ADDITIONAL GRADING INFORMATION

Polish **EXCELLENT**

Symmetry **EXCELLENT**

Fluorescence **SLIGHT**

Inscription(s) **LG654432213**

Comments: This Laboratory Grown Diamond was created by Chemical Vapor Deposition (CVD) growth process.
Indications of post-growth treatment.



IGI



October 5, 2024
IGI Report No **LG654432213**
ROUND BRILLIANT

6.40 - 6.45 X 4.07 MM

1.03 CARAT
Carat Weight
FANCY INTENSE PINK
Color Grade

VS 2
Clarity Grade
EXCELLENT
Cut Grade
63.3%
Depth
58%
Crown Width
Medium To Slightly Thick (Faceted)

Pointed
Culet
EXCELLENT
Polish
EXCELLENT
Symmetry
EXCELLENT
Fluorescence
SLIGHT
Inscription(s)
 LG654432213

Comments: This Laboratory Grown Diamond was created by Chemical Vapor Deposition (CVD) growth process.
Indications of post-growth treatment.