



ELECTRONIC COPY

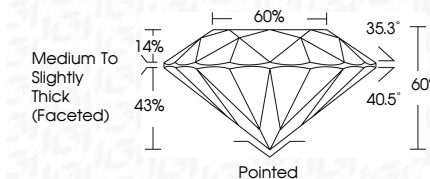
LG654432215
Report verification at igi.org



October 5, 2024
IGI Report Number: LG654432215
Description: LABORATORY GROWN DIAMOND
Shape and Cutting Style: ROUND BRILLIANT
Measurements: 6.45 - 6.49 X 3.88 MM

GRADING RESULTS

Carat Weight: 1.00 CARAT
Color Grade: FANCY PINK
Clarity Grade: VS 2
Cut Grade: IDEAL



ADDITIONAL GRADING INFORMATION

Polish: EXCELLENT
Symmetry: EXCELLENT
Fluorescence: SLIGHT
Inscription(s): IGI LG654432215

Comments: This Laboratory Grown Diamond was created by High Pressure High Temperature (HPHT) growth process. Indications of post-growth treatment.



October 5, 2024
IGI Report No LG654432215
ROUND BRILLIANT
6.45 - 6.49 X 3.88 MM
1.00 CARAT
FANCY PINK
VS 2
IDEAL
60%
60%
Medium To Slightly Thick (Faceted)
Pointed
EXCELLENT
EXCELLENT
SLIGHT
IGI LG654432215
Comments: This Laboratory Grown Diamond was created by High Pressure High Temperature (HPHT) growth process. Indications of post-growth treatment.

October 5, 2024
IGI Report Number: LG654432215
Description: LABORATORY GROWN DIAMOND
Shape and Cutting Style: ROUND BRILLIANT
Measurements: 6.45 - 6.49 X 3.88 MM

GRADING RESULTS

Carat Weight: 1.00 CARAT
Color Grade: FANCY PINK
Clarity Grade: VS 2
Cut Grade: IDEAL

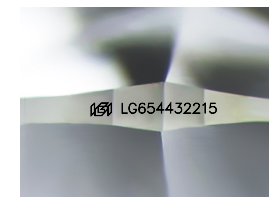
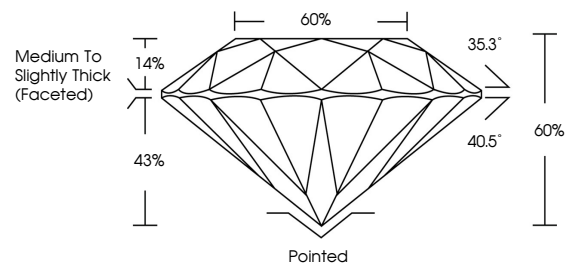
ADDITIONAL GRADING INFORMATION

Polish: EXCELLENT
Symmetry: EXCELLENT
Fluorescence: SLIGHT

Inscription(s): IGI LG654432215

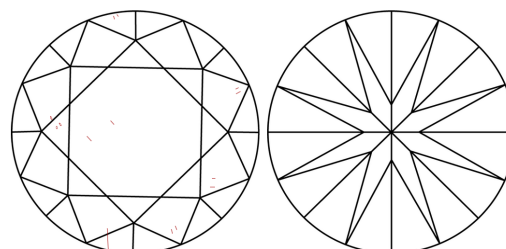
Comments: This Laboratory Grown Diamond was created by High Pressure High Temperature (HPHT) growth process. Indications of post-growth treatment.

PROPORTIONS



Sample Image Used

CLARITY CHARACTERISTICS



KEY TO SYMBOLS

Red symbols indicate internal characteristics.
Green symbols indicate external characteristics.

COLOR

D E F G H I J Faint Very Light Light

CLARITY

IF VS 1-2 VS 1-2 SI 1-2 I 1-3
Internally Flawless Very Very Slightly Included Very Slightly Included Slightly Included Included

