



ELECTRONIC COPY

LABORATORY GROWN DIAMOND REPORT

September 27, 2024
IGI Report Number LG654433993
Description LABORATORY GROWN DIAMOND
Shape and Cutting Style EMERALD CUT
Measurements 12.87 X 9.13 X 6.35 MM

GRADING RESULTS

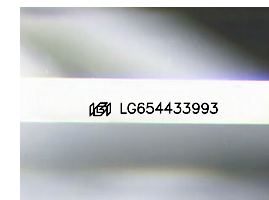
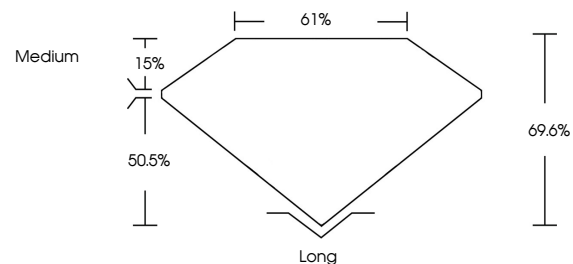
Carat Weight 7.30 CARATS
Color Grade E
Clarity Grade VS 2

ADDITIONAL GRADING INFORMATION

Polish EXCELLENT
Symmetry EXCELLENT
Fluorescence NONE
Inscription(s) IGI LG654433993

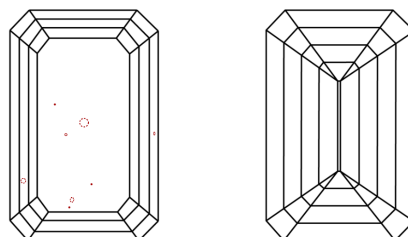
Comments: This Laboratory Grown Diamond was created by Chemical Vapor Deposition (CVD) growth process.
Type IIa

PROPORTIONS



Sample Image Used

CLARITY CHARACTERISTICS



KEY TO SYMBOLS

Red symbols indicate internal characteristics.
Green symbols indicate external characteristics.

COLOR

D E F G H I J Faint Very Light Light

CLARITY

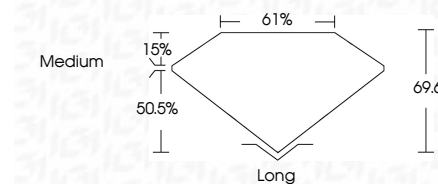
IF VS 1-2 VS 1-2 SI 1-2 I 1-3
Internally Flawless Very Very Slightly Included Very Slightly Included Slightly Included Included



September 27, 2024
IGI Report Number LG654433993
Description LABORATORY GROWN DIAMOND
Shape and Cutting Style EMERALD CUT
Measurements 12.87 X 9.13 X 6.35 MM

GRADING RESULTS

Carat Weight 7.30 CARATS
Color Grade E
Clarity Grade VS 2



ADDITIONAL GRADING INFORMATION

Polish EXCELLENT
Symmetry EXCELLENT
Fluorescence NONE
Inscription(s) IGI LG654433993
Comments: This Laboratory Grown Diamond was created by Chemical Vapor Deposition (CVD) growth process.
Type IIa



IGI



September 27, 2024
IGI Report No. LG654433993
EMERALD CUT
12.87 X 9.13 X 6.35 MM
7.30 CARATS
E
VS 2
69.6%
61%
Medium
Long
EXCELLENT
EXCELLENT
NONE
IGI LG654433993
Comments: This Laboratory Grown Diamond was created by Chemical Vapor Deposition (CVD) growth process.
Type IIa