



ELECTRONIC COPY

LG654434127
Report verification at igi.org



September 28, 2024

IGI Report Number LG654434127

Description LABORATORY GROWN DIAMOND

Shape and Cutting Style ROUND BRILLIANT

Measurements 6.40 - 6.42 X 4.04 MM

GRADING RESULTS

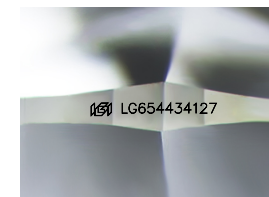
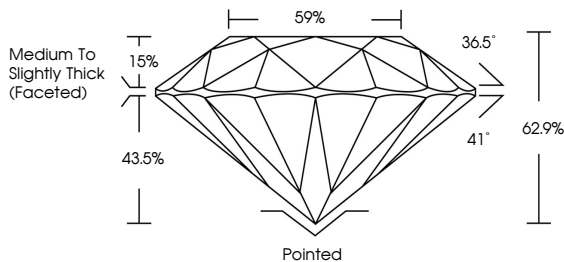
Carat Weight 1.05 CARAT

Color Grade E

Clarity Grade VVS 2

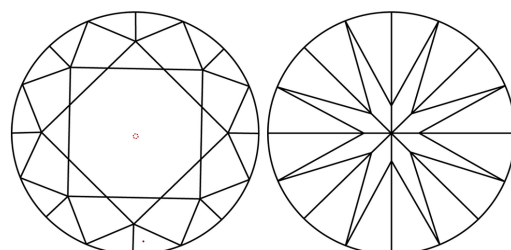
Cut Grade EXCELLENT

PROPORTIONS



Sample Image Used

CLARITY CHARACTERISTICS



KEY TO SYMBOLS

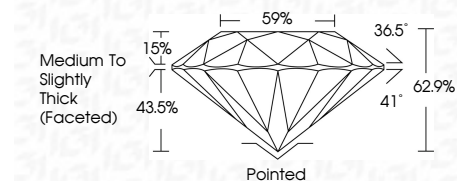
Red symbols indicate internal characteristics. Green symbols indicate external characteristics.

COLOR

Color scale table with categories: D, E, F, G, H, I, J, Faint, Very Light, Light.

CLARITY

Clarity scale table with categories: IF, VVS 1-2, VS 1-2, SI 1-2, I 1-3, Internally Flawless, Very Very Slightly Included, Very Slightly Included, Slightly Included, Included.



ADDITIONAL GRADING INFORMATION

Polish EXCELLENT

Symmetry EXCELLENT

Fluorescence NONE

Inscription(s) IGI LG654434127

Comments: As Grown - No indication of post-growth treatment. This Laboratory Grown Diamond was created by High Pressure High Temperature (HPHT) growth process. Type II



IGI



Summary table of report details: September 28, 2024, IGI Report No LG654434127, ROUND BRILLIANT, 6.40 - 6.42 X 4.04 MM, 1.05 CARAT, E, VVS 2, EXCELLENT, 62.9%, 59%, Medium To Slightly Thick (Faceted), Pointed, EXCELLENT, EXCELLENT, NONE, IGI LG654434127.

Comments: As Grown - No indication of post-growth treatment. This Laboratory Grown Diamond was created by High Pressure High Temperature (HPHT) growth process. Type II