



**INTERNATIONAL  
GEMOLOGICAL  
INSTITUTE**

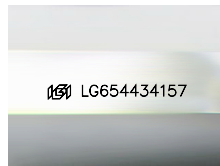
**ELECTRONIC COPY**



September 27, 2024  
**IGI Report Number** LG654434157  
**PRINCESS CUT**  
**LABORATORY GROWN DIAMOND**  
**5.20 X 5.18 X 3.62 MM**  
 Carat Weight **0.88 CARAT**  
 Color Grade **E**  
 Clarity Grade **VS 1**  
 Polish **EXCELLENT**  
 Symmetry **EXCELLENT**  
 Fluorescence **NONE**  
 Inscription(s) **IGI LG654434157**

**LABORATORY GROWN DIAMOND REPORT**

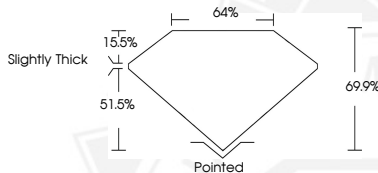
September 27, 2024  
**IGI Report Number** LG654434157  
**Description** LABORATORY GROWN DIAMOND  
**Shape and Cutting Style** PRINCESS CUT  
**Measurements** 5.20 X 5.18 X 3.62 MM



Sample Image Used

**GRADING RESULTS**

**Carat Weight** 0.88 CARAT  
**Color Grade** E  
**Clarity Grade** VS 1



**ADDITIONAL GRADING INFORMATION**

**Polish** EXCELLENT  
**Symmetry** EXCELLENT  
**Fluorescence** NONE  
**Inscription(s)** IGI LG654434157

Comments: As Grown - No indication of post-growth treatment.  
 This Laboratory Grown Diamond was created by High Pressure High Temperature (HPHT) growth process.  
 Type II



September 27, 2024  
**IGI Report Number** LG654434157  
**PRINCESS CUT**  
**LABORATORY GROWN DIAMOND**  
**5.20 X 5.18 X 3.62 MM**  
 Carat Weight **0.88 CARAT**  
 Color Grade **E**  
 Clarity Grade **VS 1**  
 Polish **EXCELLENT**  
 Symmetry **EXCELLENT**  
 Fluorescence **NONE**  
 Inscription(s) **IGI LG654434157**



THIS DOCUMENT WAS PRODUCED WITH THE FOLLOWING SECURITY MEASURES: SPECIAL DOCUMENT PAPER, INK SCREENS, WATERMARK, BACKGROUND DESIGN, HOLOGRAM AND OTHER SECURITY FEATURES NOT LISTED AND DO EXCEED DOCUMENT SECURITY INDUSTRY GUIDELINES.

For terms & conditions and to verify this report, please visit [www.igi.org](http://www.igi.org)

Comments: As Grown - No indication of post-growth treatment. This Laboratory Grown Diamond was created by High Pressure High Temperature (HPHT) growth process. Type II