



**LG654454840**



September 24, 2024

IGI Report Number **LG654454840**

**EMERALD CUT**

**LABORATORY GROWN DIAMOND**

**6.89 X 4.43 X 2.66 MM**

Carat Weight **0.87 CARAT**

Color Grade **F**

Clarity Grade **VS 1**

Polish **EXCELLENT**

Symmetry **VERY GOOD**

Fluorescence **NONE**

Inscription(s) **IGI LG654454840**

Comments: This Laboratory Grown Diamond was created by Chemical Vapor Deposition (CVD) growth process. Type IIa

**LABORATORY GROWN DIAMOND REPORT**

September 24, 2024

IGI Report Number **LG654454840**

Description **LABORATORY GROWN DIAMOND**

Shape and Cutting Style **EMERALD CUT**

Measurements **6.89 X 4.43 X 2.66 MM**

**GRADING RESULTS**

Carat Weight **0.87 CARAT**

Color Grade **F**

Clarity Grade **VS 1**

**ADDITIONAL GRADING INFORMATION**

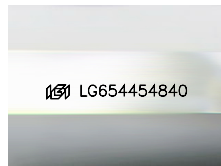
Polish **EXCELLENT**

Symmetry **VERY GOOD**

Fluorescence **NONE**

Inscription(s) **IGI LG654454840**

Comments: This Laboratory Grown Diamond was created by Chemical Vapor Deposition (CVD) growth process. Type IIa



Sample Image Used



September 24, 2024

IGI Report Number **LG654454840**

**EMERALD CUT**

**LABORATORY GROWN DIAMOND**

**6.89 X 4.43 X 2.66 MM**

Carat Weight **0.87 CARAT**

Color Grade **F**

Clarity Grade **VS 1**

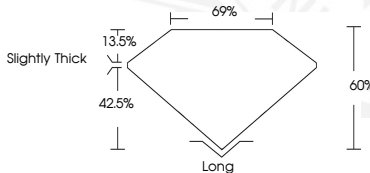
Polish **EXCELLENT**

Symmetry **VERY GOOD**

Fluorescence **NONE**

Inscription(s) **IGI LG654454840**

Comments: This Laboratory Grown Diamond was created by Chemical Vapor Deposition (CVD) growth process. Type IIa



THIS DOCUMENT WAS PRODUCED WITH THE FOLLOWING SECURITY MEASURES: SPECIAL DOCUMENT PAPER, INK SCREENS, WATERMARK, BACKGROUND DESIGN, HOLOGRAM AND OTHER SECURITY FEATURES NOT LISTED AND DO EXCEED DOCUMENT SECURITY INDUSTRY GUIDELINES.