



ELECTRONIC COPY

LG654456491
Report verification at igi.org



September 27, 2024

IGI Report Number **LG654456491**

Description **LABORATORY GROWN DIAMOND**

Shape and Cutting Style **ROUND BRILLIANT**

Measurements **9.64 - 9.68 X 5.85 MM**

GRADING RESULTS

Carat Weight **3.30 CARATS**

Color Grade **D**

Clarity Grade **VVS 1**

Cut Grade **IDEAL**

September 27, 2024

IGI Report Number **LG654456491**

Description **LABORATORY GROWN DIAMOND**

Shape and Cutting Style **ROUND BRILLIANT**

Measurements **9.64 - 9.68 X 5.85 MM**

GRADING RESULTS

Carat Weight **3.30 CARATS**

Color Grade **D**

Clarity Grade **VVS 1**

Cut Grade **IDEAL**

ADDITIONAL GRADING INFORMATION

Polish **EXCELLENT**

Symmetry **EXCELLENT**

Fluorescence **NONE**

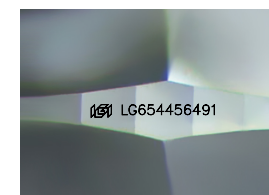
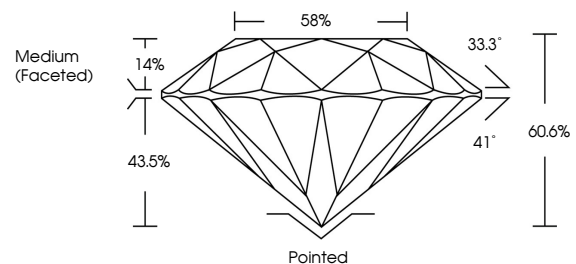
Inscription(s) **LG654456491**

Comments: As Grown - No indication of post-growth treatment.

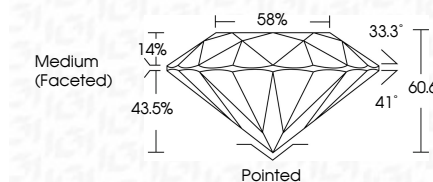
This Laboratory Grown Diamond was created by High Pressure High Temperature (HPHT) growth process.

Type II

PROPORTIONS



Sample Image Used



COLOR

D E F G H I J Faint Very Light Light

CLARITY

IF VS¹⁻² VS¹⁻² SI¹⁻² I¹⁻³

Internally Flawless Very Very Slightly Included Very Slightly Included Slightly Included Included

ADDITIONAL GRADING INFORMATION

Polish **EXCELLENT**

Symmetry **EXCELLENT**

Fluorescence **NONE**

Inscription(s) **LG654456491**

Comments: As Grown - No indication of post-growth treatment.

This Laboratory Grown Diamond was created by High Pressure High Temperature (HPHT) growth process.

Type II



IGI



September 27, 2024	IGI Report No LG654456491	3.30 CARATS	D	Pointed
ROUND BRILLIANT	9.64 - 9.68 X 5.85 MM	VVS 1	IDEAL	EXCELLENT
Color Grade	Depth	60.6%	58%	NONE
Clarity Grade	Table	14%	43.5%	None
Cut Grade	Grille	Medium (Faceted)		IGI LG654456491
Polish	Symmetry	Fluorescence	Inscriptions(s)	
EXCELLENT	EXCELLENT	NONE		
<p>Comments: As Grown - No indication of post-growth treatment. This Laboratory Grown Diamond was created by High Pressure High Temperature (HPHT) growth process. Type II</p>				