



ELECTRONIC COPY

LG654458942
Report verification at igi.org



September 25, 2024
IGI Report Number **LG654458942**
Description **LABORATORY GROWN DIAMOND**
Shape and Cutting Style **CUT CORNERED
RECTANGULAR MODIFIED
BRILLIANT**

Measurements **8.52 X 6.19 X 4.08 MM**

GRADING RESULTS

Carat Weight **1.83 CARAT**
Color Grade **F**
Clarity Grade **VS 1**

September 25, 2024
IGI Report Number **LG654458942**
Description **LABORATORY GROWN DIAMOND**
Shape and Cutting Style **CUT CORNERED RECTANGULAR
MODIFIED BRILLIANT**
Measurements **8.52 X 6.19 X 4.08 MM**

GRADING RESULTS

Carat Weight **1.83 CARAT**
Color Grade **F**
Clarity Grade **VS 1**

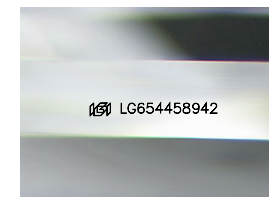
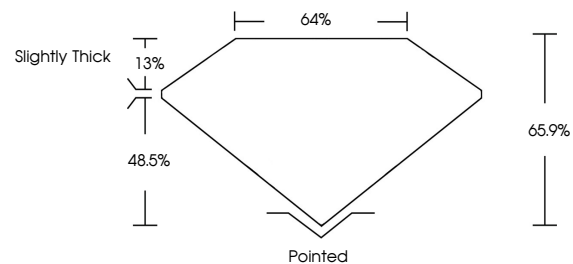
ADDITIONAL GRADING INFORMATION

Polish **EXCELLENT**
Symmetry **EXCELLENT**
Fluorescence **NONE**

Inscription(s) **IGI LG654458942**

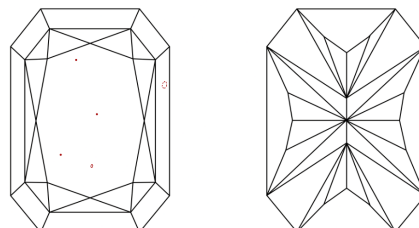
Comments: This Laboratory Grown Diamond was created by Chemical Vapor Deposition (CVD) growth process. Type IIa

PROPORTIONS



Sample Image Used

CLARITY CHARACTERISTICS



KEY TO SYMBOLS

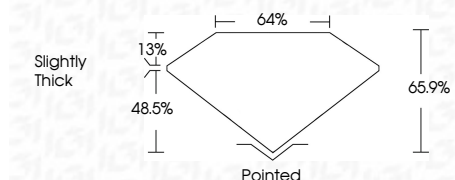
Red symbols indicate internal characteristics.
Green symbols indicate external characteristics.

COLOR

D E F G H I J Faint Very Light Light

CLARITY

IF	VS ¹⁻²	VS ¹⁻²	SI ¹⁻²	I ¹⁻³
Internally Flawless	Very Very Slightly Included	Very Slightly Included	Slightly Included	Included



ADDITIONAL GRADING INFORMATION

Polish **EXCELLENT**
Symmetry **EXCELLENT**
Fluorescence **NONE**
Inscription(s) **IGI LG654458942**

Comments: This Laboratory Grown Diamond was created by Chemical Vapor Deposition (CVD) growth process. Type IIa



IGI



September 25, 2024
IGI Report No **LG654458942**
CUT CORNERED RECT. MODIFIED BRILLIANT
8.52 X 6.19 X 4.08 MM
Carat Weight **1.83 CARAT**
Color Grade **F**
Clarity Grade **VS 1**
Depth **48.5%**
Table **13%**
Girdle **Slightly Thick**
Culet **Pointed**
Polish **EXCELLENT**
Symmetry **EXCELLENT**
Fluorescence **NONE**
Inscription(s) **IGI LG654458942**

Comments: This Laboratory Grown Diamond was created by Chemical Vapor Deposition (CVD) growth process. Type IIa