



**INTERNATIONAL
GEMOLOGICAL
INSTITUTE**

LABORATORY GROWN DIAMOND REPORT

September 25, 2024
 IGI Report Number **LG654459811**
 Description **LABORATORY GROWN DIAMOND**
 Shape and Cutting Style **ROUND BRILLIANT**
 Measurements **4.88 - 4.89 X 3.04 MM**

GRADING RESULTS

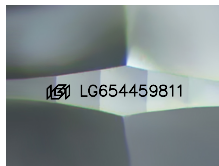
Carat Weight **0.44 CARAT**
 Color Grade **D**
 Clarity Grade **VVS 1**
 Cut Grade **IDEAL**

ADDITIONAL GRADING INFORMATION

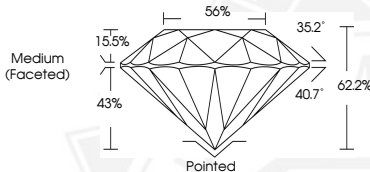
Polish **EXCELLENT**
 Symmetry **EXCELLENT**
 Fluorescence **NONE**
 Inscription(s) **IGI LG654459811**

Comments: HEARTS & ARROWS
 This Laboratory Grown Diamond was created by Chemical Vapor
 Deposition (CVD) growth process.
 Type Iia

ELECTRONIC COPY



Sample Image Used



HEARTS & ARROWS



September 25, 2024
 IGI Report Number **LG654459811**
 ROUND BRILLIANT
 LABORATORY GROWN DIAMOND
 4.88 - 4.89 X 3.04 MM
 Carat Weight **0.44 CARAT**
 Color Grade **D**
 Clarity Grade **VVS 1**
 Cut Grade **IDEAL**
 Polish **EXCELLENT**
 Symmetry **EXCELLENT**
 Fluorescence **NONE**
 Inscription(s) **IGI LG654459811**
 Comments: HEARTS & ARROWS This
 Laboratory Grown Diamond was
 created by Chemical Vapor
 Deposition (CVD) growth process.
 Type Iia



September 25, 2024
 IGI Report Number **LG654459811**
 ROUND BRILLIANT
 LABORATORY GROWN DIAMOND
 4.88 - 4.89 X 3.04 MM
 Carat Weight **0.44 CARAT**
 Color Grade **D**
 Clarity Grade **VVS 1**
 Cut Grade **IDEAL**
 Polish **EXCELLENT**
 Symmetry **EXCELLENT**
 Fluorescence **NONE**
 Inscription(s) **IGI LG654459811**
 Comments: HEARTS & ARROWS This
 Laboratory Grown Diamond was
 created by Chemical Vapor
 Deposition (CVD) growth process.
 Type Iia

THIS DOCUMENT WAS PRODUCED WITH THE FOLLOWING SECURITY MEASURES: SPECIAL DOCUMENT PAPER, INK SCREENS, WATERMARK, BACKGROUND DESIGN, HOLOGRAM AND OTHER SECURITY FEATURES NOT LISTED AND DO EXCEED DOCUMENT SECURITY INDUSTRY GUIDELINES.

For terms & conditions and to verify this report, please visit www.igi.org