

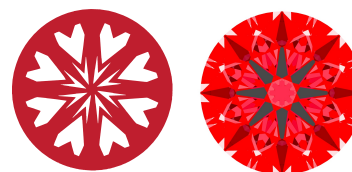


**INTERNATIONAL
GEMOLOGICAL
INSTITUTE**

LG654459872
Report verification at igi.org

LIGHT PERFORMANCE REPORT

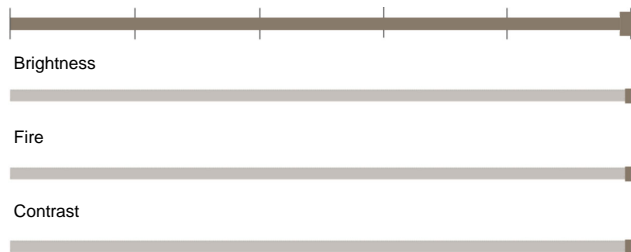
Light Performance Grade: Exceptional



Ideal-Scope representation

Low Moderate High Superior Exceptional

Light Performance



COLOR

D E F G H I J Faint Very Light Light

CLARITY

IF	VS ¹⁻²	VS ¹⁻²	SI ¹⁻²	I ¹⁻³
Internally Flawless	Very Very Slightly Included	Very Slightly Included	Slightly Included	Included

ELECTRONIC COPY

LABORATORY GROWN DIAMOND REPORT

September 25, 2024
IGI Report Number **LG654459872**
Description **LABORATORY GROWN DIAMOND**
Shape and Cutting Style **ROUND BRILLIANT**
Measurements **6.40 - 6.43 x 4.00 mm**

GRADING RESULTS

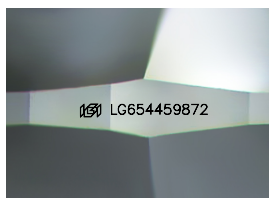
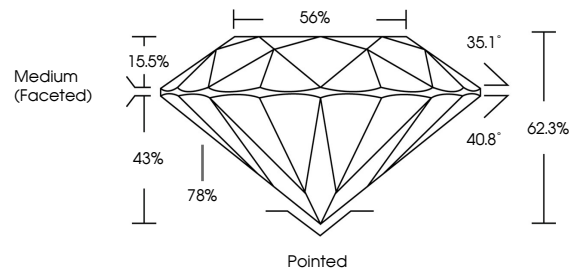
Carat Weight **1.01 CARAT**
Color Grade **E**
Clarity Grade **VVS 1**
Cut Grade **IDEAL**

ADDITIONAL GRADING INFORMATION

Polish **EXCELLENT**
Symmetry **EXCELLENT**
Fluorescence **NONE**
Inscription(s) **IGI LG654459872**

Comments: HEARTS & ARROWS
This Laboratory Grown Diamond was created by
Chemical Vapor Deposition (CVD) growth process.
Type IIa

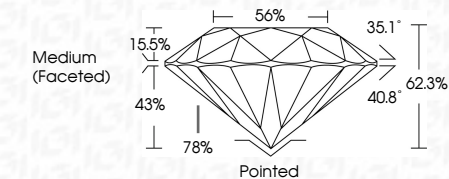
PROPORTIONS



Sample Image Used



September 25, 2024
IGI Report Number **LG654459872**
Description **LABORATORY GROWN DIAMOND**
Shape and Cutting Style **ROUND BRILLIANT**
Measurements **6.40 - 6.43 X 4.00 MM**
GRADING RESULTS
Carat Weight **1.01 CARAT**
Color Grade **E**
Clarity Grade **VVS 1**
Cut Grade **IDEAL**



ADDITIONAL GRADING INFORMATION

Polish **EXCELLENT**
Symmetry **EXCELLENT**
Fluorescence **NONE**
Inscription(s) **IGI LG654459872**
Comments: HEARTS & ARROWS
This Laboratory Grown Diamond was created by
Chemical Vapor Deposition (CVD) growth process.
Type IIa



IGI



© IGI 2020, International Gemological Institute FD - 10 20

THIS DOCUMENT WAS PRODUCED WITH THE FOLLOWING SECURITY MEASURES: SPECIAL DOCUMENT PAPER, INK SCREENS, WATERMARK, BACKGROUND DESIGNS, HOLOGRAM AND OTHER SECURITY FEATURES NOT LISTED AND DO EXCEED DOCUMENT SECURITY INDUSTRY GUIDELINES.

www.igi.org

September 25, 2024
IGI Report No. **LG654459872**
ROUND BRILLIANT
6.40 - 6.43 X 4.00 MM
Carat Weight **1.01 CARAT**
Color Grade **E**
Clarity Grade **VVS 1**
Cut Grade **IDEAL**
Depth **43%**
Table **15.5%**
Girdle **Medium (Faceted)**
Culet **Pointed**
Polish **EXCELLENT**
Symmetry **EXCELLENT**
Fluorescence **NONE**
Inscription(s) **IGI LG654459872**
Comments: **HEARTS & ARROWS**
This Laboratory Grown Diamond was
created by Chemical Vapor Deposition
(CVD) growth process.
Type IIa