



ELECTRONIC COPY

LG654461430
Report verification at igi.org



September 28, 2024

IGI Report Number **LG654461430**

Description **LABORATORY GROWN DIAMOND**

Shape and Cutting Style **ROUND BRILLIANT**

Measurements **6.30 - 6.34 X 3.95 MM**

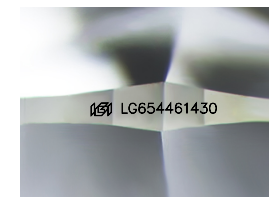
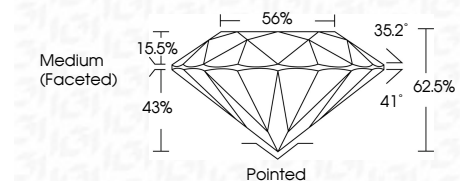
GRADING RESULTS

Carat Weight **0.96 CARAT**

Color Grade **D**

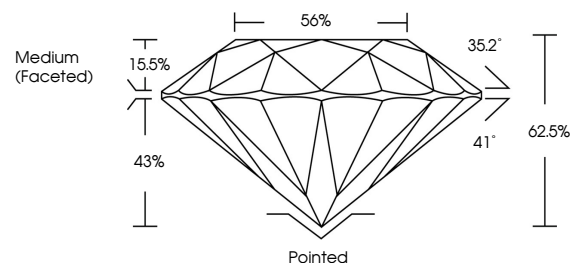
Clarity Grade **VS 2**

Cut Grade **IDEAL**

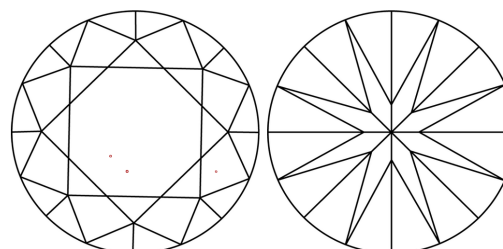


Sample Image Used

PROPORTIONS



CLARITY CHARACTERISTICS



KEY TO SYMBOLS

Red symbols indicate internal characteristics.
Green symbols indicate external characteristics.

COLOR

D E F G H I J Faint Very Light Light

CLARITY

IF	VS ¹⁻²	VS ¹⁻²	SI ¹⁻²	I ¹⁻³
Internally Flawless	Very Very Slightly Included	Very Slightly Included	Slightly Included	Included

ADDITIONAL GRADING INFORMATION

Polish **EXCELLENT**

Symmetry **EXCELLENT**

Fluorescence **NONE**

Inscription(s) **IGI LG654461430**

Comments: This Laboratory Grown Diamond was created by Chemical Vapor Deposition (CVD) growth process. Type IIa



IGI



September 28, 2024
IGI Report No LG654461430
ROUND BRILLIANT
6.30 - 6.34 X 3.95 MM
0.96 CARAT
D
VS 2
IDEAL
62.5%
56%
Medium (Faceted)Pointed
EXCELLENT
EXCELLENT
NONE
IGI LG654461430
Comments: This Laboratory Grown Diamond was created by Chemical Vapor Deposition (CVD) growth process. Type IIa