



ELECTRONIC COPY

LG654470085
Report verification at igi.org



September 26, 2024

IGI Report Number LG654470085

Description LABORATORY GROWN DIAMOND

Shape and Cutting Style CUT CORNERED RECTANGULAR MODIFIED BRILLIANT

Measurements 11.95 X 8.36 X 5.66 MM

GRADING RESULTS

Carat Weight 4.95 CARATS

Color Grade E

Clarity Grade VS 1

LABORATORY GROWN DIAMOND REPORT

September 26, 2024

IGI Report Number LG654470085

Description LABORATORY GROWN DIAMOND

Shape and Cutting Style CUT CORNERED RECTANGULAR MODIFIED BRILLIANT

Measurements 11.95 X 8.36 X 5.66 MM

GRADING RESULTS

Carat Weight 4.95 CARATS

Color Grade E

Clarity Grade VS 1

ADDITIONAL GRADING INFORMATION

Polish EXCELLENT

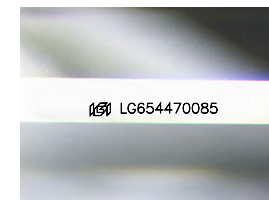
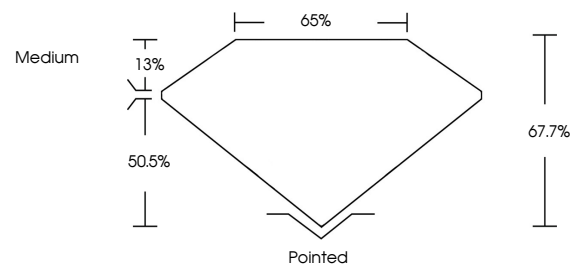
Symmetry EXCELLENT

Fluorescence NONE

Inscription(s) LG654470085

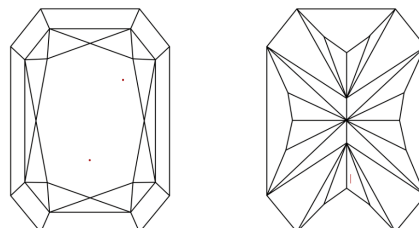
Comments: This Laboratory Grown Diamond was created by Chemical Vapor Deposition (CVD) growth process. Type IIa

PROPORTIONS



Sample Image Used

CLARITY CHARACTERISTICS



KEY TO SYMBOLS

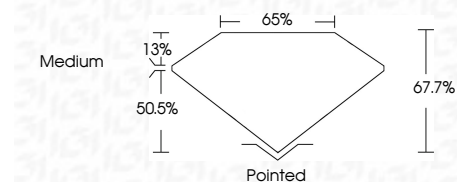
Red symbols indicate internal characteristics. Green symbols indicate external characteristics.

COLOR

D E F G H I J Faint Very Light Light

CLARITY

Table mapping clarity grades (IF, VVS, VS, SI, I) to their descriptions (Internally Flawless, Very Very Slightly Included, etc.)



ADDITIONAL GRADING INFORMATION

Polish EXCELLENT

Symmetry EXCELLENT

Fluorescence NONE

Inscription(s) LG654470085

Comments: This Laboratory Grown Diamond was created by Chemical Vapor Deposition (CVD) growth process. Type IIa



IGI



Summary of report details including date, report number, description, measurements, grading results, and additional information.

Comments: This Laboratory Grown Diamond was created by Chemical Vapor Deposition (CVD) growth process. Type IIa