



**ELECTRONIC COPY**

LG654482231  
Report verification at igi.org



September 26, 2024

IGI Report Number **LG654482231**

Description **LABORATORY GROWN DIAMOND**

Shape and Cutting Style **CUSHION BRILLIANT**

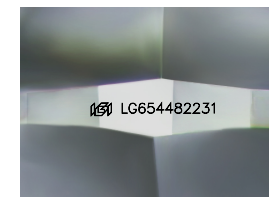
Measurements **10.83 X 7.43 X 5.25 MM**

**GRADING RESULTS**

Carat Weight **4.01 CARATS**

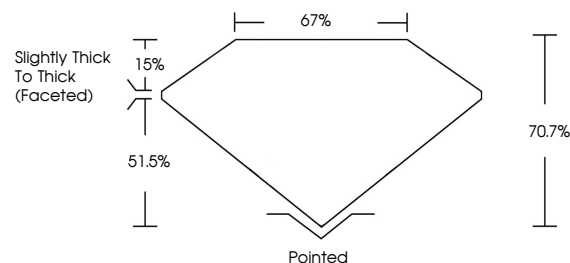
Color Grade **D**

Clarity Grade **VVS 2**

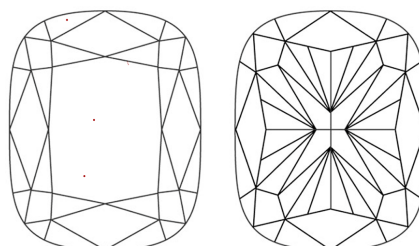


Sample Image Used

**PROPORTIONS**



**CLARITY CHARACTERISTICS**



**KEY TO SYMBOLS**

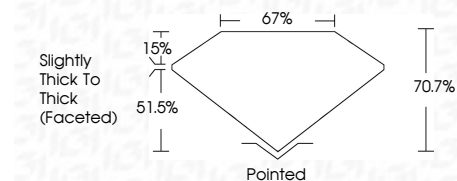
Red symbols indicate internal characteristics.  
Green symbols indicate external characteristics.

**COLOR**

D E F G H I J Faint Very Light Light

**CLARITY**

IF	VS <sup>1-2</sup>	VS <sup>1-2</sup>	SI <sup>1-2</sup>	I <sup>1-3</sup>
Internally Flawless	Very Very Slightly Included	Very Slightly Included	Slightly Included	Included



**ADDITIONAL GRADING INFORMATION**

Polish **EXCELLENT**

Symmetry **EXCELLENT**

Fluorescence **NONE**

Inscription(s) **IGI LG654482231**

Comments: This Laboratory Grown Diamond was created by Chemical Vapor Deposition (CVD) growth process. Type IIa



**IGI**



September 26, 2024  
IGI Report No LG654482231  
CUSHION BRILLIANT

10.83 X 7.43 X 5.25 MM

4.01 CARATS  
D  
VVS 2  
70.7%  
67%  
Slightly Thick To Thick (Faceted)

Pointed  
EXCELLENT  
EXCELLENT  
NONE  
IGI LG654482231

Comments: This Laboratory Grown Diamond was created by Chemical Vapor Deposition (CVD) growth process. Type IIa