



**ELECTRONIC COPY**

LG654484193  
Report verification at igi.org



September 30, 2024

IGI Report Number **LG654484193**

Description **LABORATORY GROWN DIAMOND**

Shape and Cutting Style **ROUND BRILLIANT**

Measurements **10.92 - 10.96 X 6.83 MM**

**GRADING RESULTS**

Carat Weight **5.06 CARATS**

Color Grade **F**

Clarity Grade **VS 2**

Cut Grade **EXCELLENT**

September 30, 2024  
IGI Report Number **LG654484193**  
Description **LABORATORY GROWN DIAMOND**  
Shape and Cutting Style **ROUND BRILLIANT**  
Measurements **10.92 - 10.96 X 6.83 MM**

**GRADING RESULTS**

Carat Weight **5.06 CARATS**

Color Grade **F**

Clarity Grade **VS 2**

Cut Grade **EXCELLENT**

**ADDITIONAL GRADING INFORMATION**

Polish **EXCELLENT**

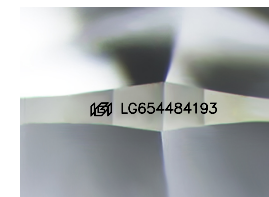
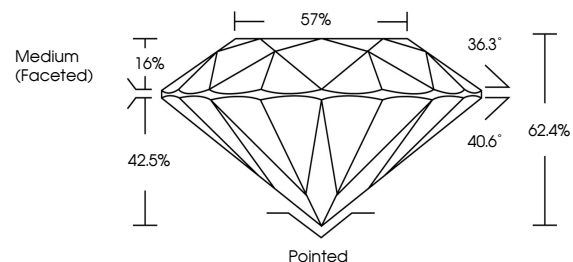
Symmetry **EXCELLENT**

Fluorescence **NONE**

Inscription(s) **IGI LG654484193**

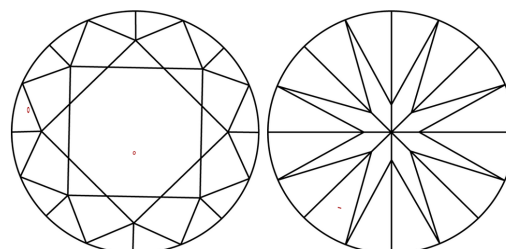
Comments: This Laboratory Grown Diamond was created by Chemical Vapor Deposition (CVD) growth process.  
Type IIa

**PROPORTIONS**



Sample Image Used

**CLARITY CHARACTERISTICS**



**KEY TO SYMBOLS**

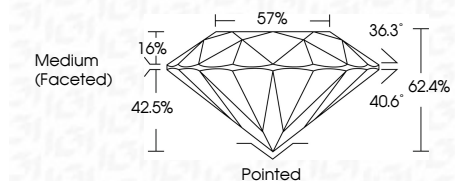
Red symbols indicate internal characteristics.  
Green symbols indicate external characteristics.

**COLOR**

D E F G H I J Faint Very Light Light

**CLARITY**

IF	VS <sup>1-2</sup>	VS <sup>1-2</sup>	SI <sup>1-2</sup>	I <sup>1-3</sup>
Internally Flawless	Very Very Slightly Included	Very Slightly Included	Slightly Included	Included



**ADDITIONAL GRADING INFORMATION**

Polish **EXCELLENT**

Symmetry **EXCELLENT**

Fluorescence **NONE**

Inscription(s) **IGI LG654484193**

Comments: This Laboratory Grown Diamond was created by Chemical Vapor Deposition (CVD) growth process.  
Type IIa



**IGI**



September 30, 2024  
IGI Report No LG654484193  
**ROUND BRILLIANT**

**5.06 CARATS**  
Carat Weight  
**F**  
Color Grade

**VS 2**  
Clarity Grade  
**EXCELLENT**  
Cut Grade  
**62.4%**  
Depth  
**57%**  
Girdle  
Medium (Faceted)

**Pointed**  
Culet  
**EXCELLENT**  
Polish  
**EXCELLENT**  
Symmetry  
**NONE**  
Fluorescence  
**IGI LG654484193**  
Inscriptions(s)

Comments: This Laboratory Grown Diamond was created by Chemical Vapor Deposition (CVD) growth process.  
Type IIa