



ELECTRONIC COPY

LG654491016
Report verification at igi.org



September 27, 2024

IGI Report Number **LG654491016**

Description **LABORATORY GROWN DIAMOND**

Shape and Cutting Style **ROUND BRILLIANT**

Measurements **6.70 - 6.74 X 4.18 MM**

GRADING RESULTS

Carat Weight **1.17 CARAT**

Color Grade **D**

Clarity Grade **VVS 2**

Cut Grade **IDEAL**

September 27, 2024
IGI Report Number **LG654491016**
Description **LABORATORY GROWN DIAMOND**
Shape and Cutting Style **ROUND BRILLIANT**
Measurements **6.70 - 6.74 X 4.18 MM**

GRADING RESULTS

Carat Weight **1.17 CARAT**

Color Grade **D**

Clarity Grade **VVS 2**

Cut Grade **IDEAL**

ADDITIONAL GRADING INFORMATION

Polish **EXCELLENT**

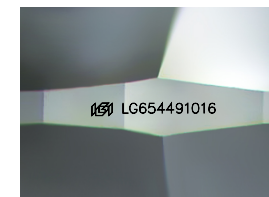
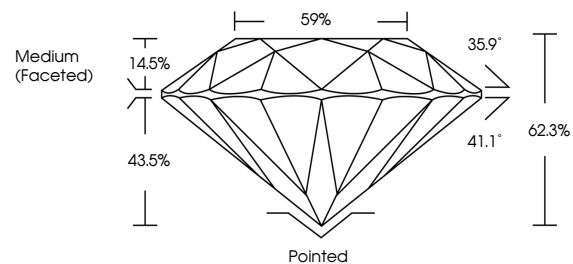
Symmetry **EXCELLENT**

Fluorescence **NONE**

Inscription(s) **IGI LG654491016**

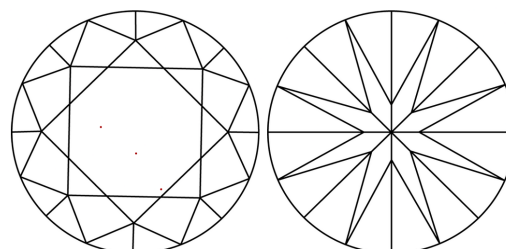
Comments: This Laboratory Grown Diamond was created by Chemical Vapor Deposition (CVD) growth process. Type IIa

PROPORTIONS



Sample Image Used

CLARITY CHARACTERISTICS



KEY TO SYMBOLS

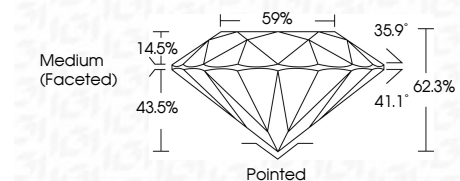
Red symbols indicate internal characteristics.
Green symbols indicate external characteristics.

COLOR

D E F G H I J Faint Very Light Light

CLARITY

| | | | | |
|---------------------|-----------------------------|------------------------|-------------------|------------------|
| IF | VS ¹⁻² | VS ¹⁻² | SI ¹⁻² | I ¹⁻³ |
| Internally Flawless | Very Very Slightly Included | Very Slightly Included | Slightly Included | Included |



ADDITIONAL GRADING INFORMATION

Polish **EXCELLENT**

Symmetry **EXCELLENT**

Fluorescence **NONE**

Inscription(s) **IGI LG654491016**

Comments: This Laboratory Grown Diamond was created by Chemical Vapor Deposition (CVD) growth process. Type IIa



IGI



| | | | | | | | | | | | | | | | |
|--------------------|---------------------------|-----------------|-----------------------|------------|-------|--------|-------|-------|--------|------------------|--------------|-----------------|---|------|-----------------|
| September 27, 2024 | IGI Report No LG654491016 | ROUND BRILLIANT | 6.70 - 6.74 X 4.18 MM | 1.17 CARAT | D | VVS 2 | IDEAL | 62.3% | 59% | Medium (Faceted) | Pointed | EXCELLENT | EXCELLENT | NONE | IGI LG654491016 |
| IGI | Color Grade | Clarity Grade | Cut Grade | Depth | Table | Girdle | Grade | Culet | Polish | Symmetry | Fluorescence | Inscriptions(s) | Comments: This Laboratory Grown Diamond was created by Chemical Vapor Deposition (CVD) growth process. Type IIa | | |