



ELECTRONIC COPY

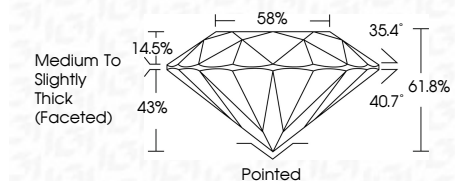
LG654491039
Report verification at igi.org



September 27, 2024
IGI Report Number LG654491039
Description LABORATORY GROWN DIAMOND
Shape and Cutting Style ROUND BRILLIANT
Measurements 8.74 - 8.79 X 5.41 MM

GRADING RESULTS

Carat Weight 2.59 CARATS
Color Grade F
Clarity Grade VS 1
Cut Grade IDEAL



ADDITIONAL GRADING INFORMATION

Polish EXCELLENT
Symmetry EXCELLENT
Fluorescence NONE
Inscription(s) IGI LG654491039
Comments: This Laboratory Grown Diamond was created by Chemical Vapor Deposition (CVD) growth process. Type IIa



September 27, 2024
IGI Report No. LG654491039
ROUND BRILLIANT
8.74 - 8.79 X 5.41 MM
2.59 CARATS
F
VS 1
IDEAL
61.8%
58%
Medium To Slightly Thick (Faceted)
Pointed
EXCELLENT
EXCELLENT
NONE
IGI LG654491039
Comments: This Laboratory Grown Diamond was created by Chemical Vapor Deposition (CVD) growth process. Type IIa

September 27, 2024
IGI Report Number LG654491039
Description LABORATORY GROWN DIAMOND
Shape and Cutting Style ROUND BRILLIANT
Measurements 8.74 - 8.79 X 5.41 MM

GRADING RESULTS

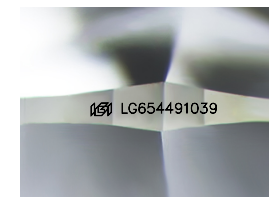
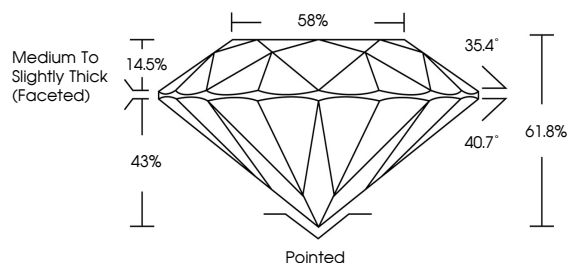
Carat Weight 2.59 CARATS
Color Grade F
Clarity Grade VS 1
Cut Grade IDEAL

ADDITIONAL GRADING INFORMATION

Polish EXCELLENT
Symmetry EXCELLENT
Fluorescence NONE
Inscription(s) IGI LG654491039

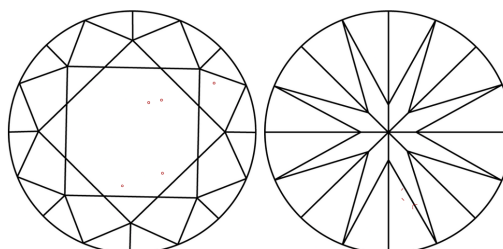
Comments: This Laboratory Grown Diamond was created by Chemical Vapor Deposition (CVD) growth process. Type IIa

PROPORTIONS



Sample Image Used

CLARITY CHARACTERISTICS



KEY TO SYMBOLS

Red symbols indicate internal characteristics.
Green symbols indicate external characteristics.

COLOR

D E F G H I J Faint Very Light Light

CLARITY

IF VS 1-2 VS 1-2 SI 1-2 I 1-3
Internally Flawless Very Very Slightly Included Very Slightly Included Slightly Included Included

