



ELECTRONIC COPY

LG654491062
Report verification at igi.org



September 27, 2024

IGI Report Number LG654491062

Description LABORATORY GROWN DIAMOND

Shape and Cutting Style ROUND BRILLIANT

Measurements 7.02 - 7.10 X 4.38 MM

GRADING RESULTS

Carat Weight 1.34 CARAT

Color Grade E

Clarity Grade VS 1

Cut Grade IDEAL

September 27, 2024

IGI Report Number LG654491062

Description LABORATORY GROWN DIAMOND

Shape and Cutting Style ROUND BRILLIANT

Measurements 7.02 - 7.10 X 4.38 MM

GRADING RESULTS

Carat Weight 1.34 CARAT

Color Grade E

Clarity Grade VS 1

Cut Grade IDEAL

ADDITIONAL GRADING INFORMATION

Polish EXCELLENT

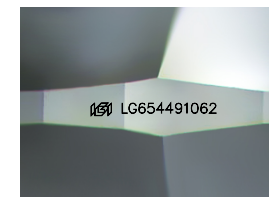
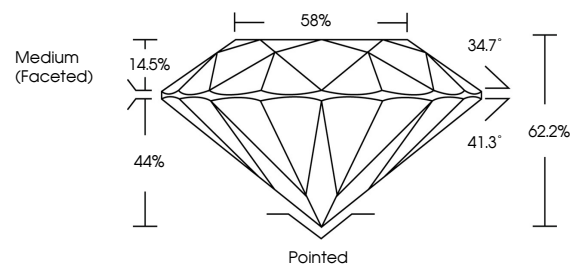
Symmetry EXCELLENT

Fluorescence NONE

Inscription(s) IGI LG654491062

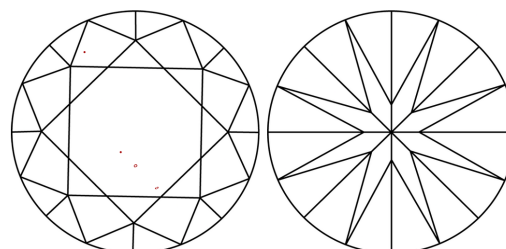
Comments: This Laboratory Grown Diamond was created by Chemical Vapor Deposition (CVD) growth process. Type IIa

PROPORTIONS



Sample Image Used

CLARITY CHARACTERISTICS



KEY TO SYMBOLS

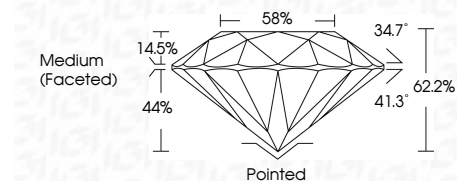
Red symbols indicate internal characteristics. Green symbols indicate external characteristics.

COLOR

D E F G H I J Faint Very Light Light

CLARITY

IF VS 1-2 VS 1-2 SI 1-2 I 1-3 Internally Flawless Very Very Slightly Included Very Slightly Included Slightly Included Included



ADDITIONAL GRADING INFORMATION

Polish EXCELLENT

Symmetry EXCELLENT

Fluorescence NONE

Inscription(s) IGI LG654491062

Comments: This Laboratory Grown Diamond was created by Chemical Vapor Deposition (CVD) growth process. Type IIa



IGI



Table with 2 columns: Property and Value. Includes: September 27, 2024, IGI Report No. LG654491062, ROUND BRILLIANT, 7.02 - 7.10 X 4.38 MM, 1.34 CARAT, E, VS 1, IDEAL, 62.2%, 58%, Medium (Faceted), Pointed, EXCELLENT, EXCELLENT, NONE, IGI LG654491062. Comments: This Laboratory Grown Diamond was created by Chemical Vapor Deposition (CVD) growth process. Type IIa