



ELECTRONIC COPY

LG654491302
Report verification at igi.org



October 9, 2024
IGI Report Number LG654491302
Description LABORATORY GROWN DIAMOND
Shape and Cutting Style ROUND BRILLIANT
Measurements 11.50 - 11.54 X 6.82 MM

GRADING RESULTS
Carat Weight 5.51 CARATS
Color Grade E
Clarity Grade VS 1
Cut Grade IDEAL

59%
33°
Medium To Slightly Thick (Faceted) 13.5%
40.6° 59.3%
43%
Pointed

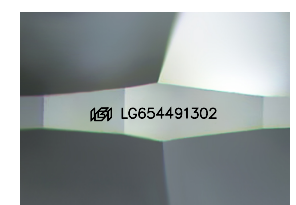
ADDITIONAL GRADING INFORMATION
Polish EXCELLENT
Symmetry EXCELLENT
Fluorescence NONE
Inscription(s) IGI LG654491302
Comments: This Laboratory Grown Diamond was created by Chemical Vapor Deposition (CVD) growth process. Type IIa



October 9, 2024
IGI Report No LG654491302
ROUND BRILLIANT
11.50 - 11.54 X 6.82 MM
5.51 CARATS
E
VS 1
IDEAL
59.3%
59%
Medium To Slightly Thick (Faceted)
Pointed
EXCELLENT
EXCELLENT
NONE
IGI LG654491302
Comments: This Laboratory Grown Diamond was created by Chemical Vapor Deposition (CVD) growth process. Type IIa

PROPORTIONS

59%
33°
Medium To Slightly Thick (Faceted) 13.5%
40.6° 59.3%
43%
Pointed



Sample Image Used

CLARITY CHARACTERISTICS

KEY TO SYMBOLS
Red symbols indicate internal characteristics.
Green symbols indicate external characteristics.

COLOR

D E F G H I J Faint Very Light Light

CLARITY

IF VS 1-2 VS 1-2 SI 1-2 I 1-3
Internally Flawless Very Very Slightly Included Very Slightly Included Slightly Included Included



October 9, 2024
IGI Report Number LG654491302
Description LABORATORY GROWN DIAMOND
Shape and Cutting Style ROUND BRILLIANT
Measurements 11.50 - 11.54 X 6.82 MM
GRADING RESULTS
Carat Weight 5.51 CARATS
Color Grade E
Clarity Grade VS 1
Cut Grade IDEAL
ADDITIONAL GRADING INFORMATION
Polish EXCELLENT
Symmetry EXCELLENT
Fluorescence NONE
Inscription(s) IGI LG654491302
Comments: This Laboratory Grown Diamond was created by Chemical Vapor Deposition (CVD) growth process. Type IIa