



ELECTRONIC COPY

LG654491457
Report verification at igi.org



October 8, 2024

IGI Report Number **LG654491457**

Description **LABORATORY GROWN DIAMOND**

Shape and Cutting Style **EMERALD CUT**

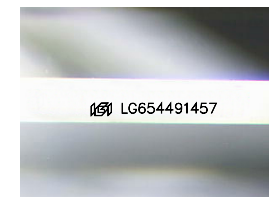
Measurements **16.79 X 11.58 X 7.81 MM**

GRADING RESULTS

Carat Weight **15.10 CARATS**

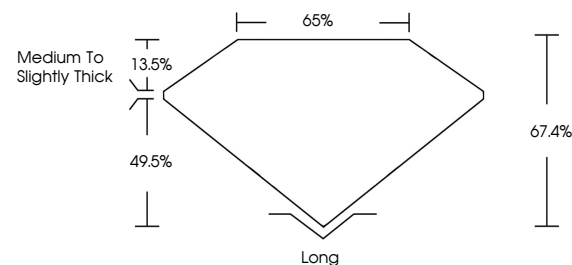
Color Grade **E**

Clarity Grade **VS 1**

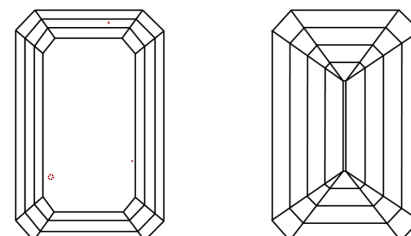


Sample Image Used

PROPORTIONS



CLARITY CHARACTERISTICS



KEY TO SYMBOLS

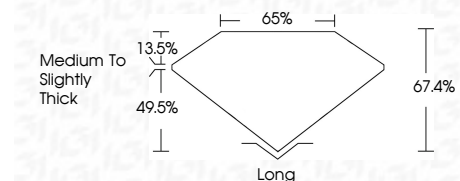
Red symbols indicate internal characteristics.
Green symbols indicate external characteristics.

COLOR

D E F G H I J Faint Very Light Light

CLARITY

IF	VS ¹⁻²	VS ¹⁻²	SI ¹⁻²	I ¹⁻³
Internally Flawless	Very Very Slightly Included	Very Slightly Included	Slightly Included	Included



ADDITIONAL GRADING INFORMATION

Polish **EXCELLENT**

Symmetry **EXCELLENT**

Fluorescence **NONE**

Inscription(s) **IGI LG654491457**

Comments: This Laboratory Grown Diamond was created by Chemical Vapor Deposition (CVD) growth process.
Type IIa



October 8, 2024
IGI Report No. LG654491457
EMERALD CUT

16.79 X 11.58 X 7.81 MM

15.10 CARATS
E

Color Grade
VS 1

Depth 67.4%
Table 65%

Medium to Slightly Thick

Culet
Long

Polish EXCELLENT
Symmetry EXCELLENT
Fluorescence NONE

Inscription(s)
IGI LG654491457

Comments: This Laboratory Grown Diamond was created by Chemical Vapor Deposition (CVD) growth process.
Type IIa