



ELECTRONIC COPY

LG654491856
Report verification at igi.org



September 30, 2024

IGI Report Number **LG654491856**

Description **LABORATORY GROWN DIAMOND**

Shape and Cutting Style **SQUARE CUSHION BRILLIANT**

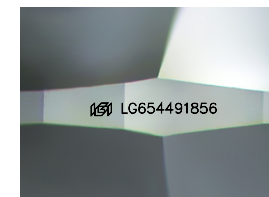
Measurements **6.00 X 5.84 X 3.92 MM**

GRADING RESULTS

Carat Weight **1.04 CARAT**

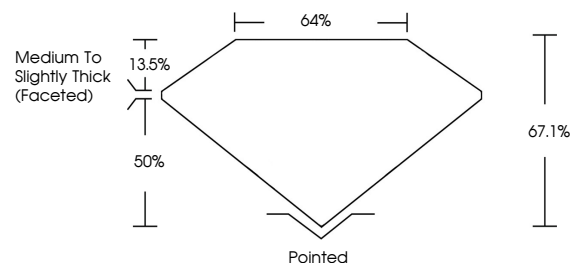
Color Grade **E**

Clarity Grade **VVS 1**

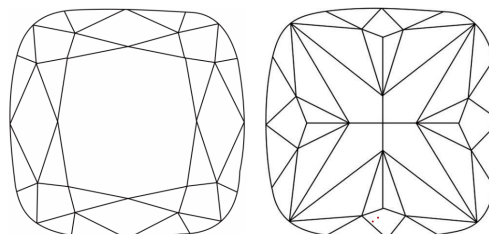


Sample Image Used

PROPORTIONS



CLARITY CHARACTERISTICS



KEY TO SYMBOLS

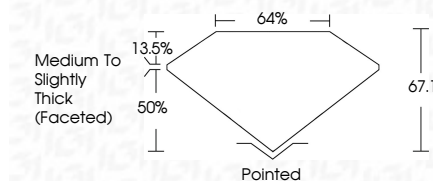
Red symbols indicate internal characteristics.
Green symbols indicate external characteristics.

COLOR

D E F G H I J Faint Very Light Light

CLARITY

IF	VS ¹⁻²	VS ¹⁻²	SI ¹⁻²	I ¹⁻³
Internally Flawless	Very Very Slightly Included	Very Slightly Included	Slightly Included	Included



ADDITIONAL GRADING INFORMATION

Polish **EXCELLENT**

Symmetry **EXCELLENT**

Fluorescence **NONE**

Inscription(s) **IGI LG654491856**

Comments: As Grown - No indication of post-growth treatment.

This Laboratory Grown Diamond was created by High Pressure High Temperature (HPHT) growth process.

Type II



IGI

September 30, 2024
IGI Report No LG654491856
SQUARE CUSHION BRILLIANT
6.00 X 5.84 X 3.92 MM
1.04 CARAT
E
VVS 1
67.1%
64%
Medium to Slightly Thick (Faceted)
Pointed
EXCELLENT
EXCELLENT
NONE
IGI LG654491856
Comments: As Grown - No indication of post-growth treatment.
This Laboratory Grown Diamond was created by High Pressure High Temperature (HPHT) growth process.
Type II

