



**ELECTRONIC COPY**

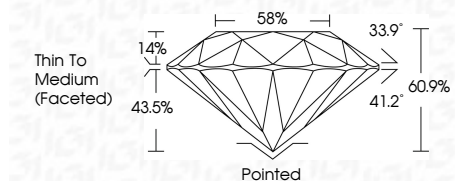
LG654499947  
Report verification at igi.org



October 3, 2024  
IGI Report Number **LG654499947**  
Description **LABORATORY GROWN DIAMOND**  
Shape and Cutting Style **ROUND BRILLIANT**  
Measurements **6.71 - 6.76 X 4.10 MM**

**GRADING RESULTS**

Carat Weight **1.13 CARAT**  
Color Grade **FANCY VIVID PINK**  
Clarity Grade **VVS 2**  
Cut Grade **IDEAL**



**ADDITIONAL GRADING INFORMATION**

Polish **EXCELLENT**  
Symmetry **EXCELLENT**  
Fluorescence **SLIGHT**  
Inscription(s) **IGI LG654499947**

Comments: This Laboratory Grown Diamond was created by Chemical Vapor Deposition (CVD) growth process. Indications of post-growth treatment.



October 3, 2024	IGI Report No LG654499947	1.13 CARAT	Thin To Medium (Faceted)
ROUND BRILLIANT	6.71 - 6.76 X 4.10 MM	FANCY VIVID PINK	Pointed
Color Grade	VVS 2	IDEAL	EXCELLENT
Clarity Grade	60.9%	88%	EXCELLENT
Depth	58%		EXCELLENT
Table	33.9°		EXCELLENT
Grille	41.2°		EXCELLENT
Culet	Pointed		EXCELLENT
Polish	EXCELLENT		EXCELLENT
Symmetry	EXCELLENT		EXCELLENT
Fluorescence	SLIGHT		EXCELLENT
Inscription(s)	IGI LG654499947		EXCELLENT

Comments: This Laboratory Grown Diamond was created by Chemical Vapor Deposition (CVD) growth process. Indications of post-growth treatment.

October 3, 2024  
IGI Report Number **LG654499947**  
Description **LABORATORY GROWN DIAMOND**  
Shape and Cutting Style **ROUND BRILLIANT**  
Measurements **6.71 - 6.76 X 4.10 MM**

**GRADING RESULTS**

Carat Weight **1.13 CARAT**  
Color Grade **FANCY VIVID PINK**  
Clarity Grade **VVS 2**  
Cut Grade **IDEAL**

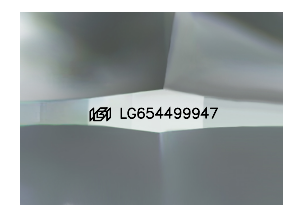
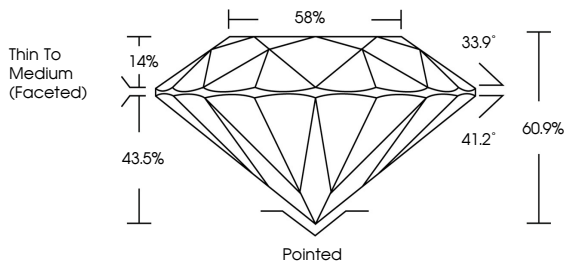
**ADDITIONAL GRADING INFORMATION**

Polish **EXCELLENT**  
Symmetry **EXCELLENT**  
Fluorescence **SLIGHT**

Inscription(s) **IGI LG654499947**

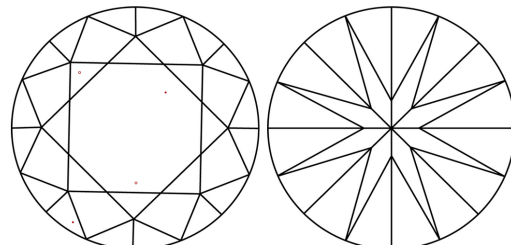
Comments: This Laboratory Grown Diamond was created by Chemical Vapor Deposition (CVD) growth process. Indications of post-growth treatment.

**PROPORTIONS**



Sample Image Used

**CLARITY CHARACTERISTICS**



**KEY TO SYMBOLS**

Red symbols indicate internal characteristics.  
Green symbols indicate external characteristics.

**COLOR**

D	E	F	G	H	I	J	Faint	Very Light	Light
---	---	---	---	---	---	---	-------	------------	-------

**CLARITY**

IF	VS <sup>1-2</sup>	VS <sup>1-2</sup>	SI <sup>1-2</sup>	I <sup>1-3</sup>
Internally Flawless	Very Very Slightly Included	Very Slightly Included	Slightly Included	Included

