



ELECTRONIC COPY

LG655411657
Report verification at igi.org



October 5, 2024

IGI Report Number **LG655411657**

Description **LABORATORY GROWN DIAMOND**

Shape and Cutting Style **PRINCESS CUT**

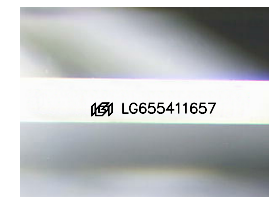
Measurements **8.12 X 7.74 X 5.28 MM**

GRADING RESULTS

Carat Weight **3.05 CARATS**

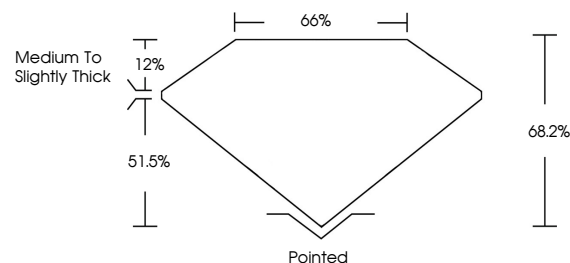
Color Grade **F**

Clarity Grade **VS 1**

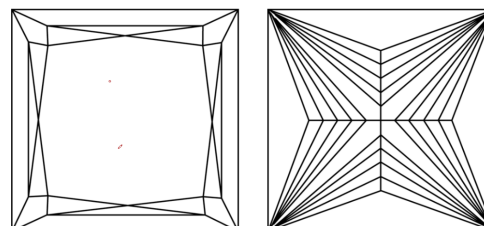


Sample Image Used

PROPORTIONS



CLARITY CHARACTERISTICS



KEY TO SYMBOLS

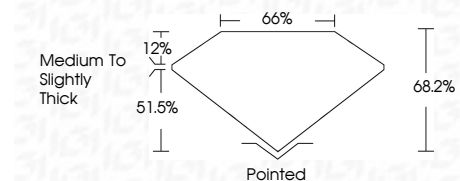
Red symbols indicate internal characteristics.
Green symbols indicate external characteristics.

COLOR

D E F G H I J Faint Very Light Light

CLARITY

IF	VS ¹⁻²	VS ¹⁻²	SI ¹⁻²	I ¹⁻³
Internally Flawless	Very Very Slightly Included	Very Slightly Included	Slightly Included	Included



ADDITIONAL GRADING INFORMATION

Polish **EXCELLENT**

Symmetry **EXCELLENT**

Fluorescence **NONE**

Inscription(s) **IGI LG655411657**

Comments: This Laboratory Grown Diamond was created by Chemical Vapor Deposition (CVD) growth process. Type IIa



IGI



October 5, 2024
IGI Report No LG655411657
PRINCESS CUT

8.12 X 7.74 X 5.28 MM

3.05 CARATS
F

Carat Weight
Color Grade
Clarity Grade
Table
Depth
Girdle

VS 1
68.2%
65%

Medium to Slightly Thick

Pointed
EXCELLENT
EXCELLENT
NONE
IGI LG655411657

Culet
Polish
Symmetry
Fluorescence
Inscription(s)

Comments: This Laboratory Grown Diamond was created by Chemical Vapor Deposition (CVD) growth process. Type IIa