



ELECTRONIC COPY

LABORATORY GROWN DIAMOND REPORT

September 30, 2024  
IGI Report Number LG655411760  
Description LABORATORY GROWN DIAMOND  
Shape and Cutting Style EMERALD CUT  
Measurements 6.48 X 4.79 X 3.43 MM

GRADING RESULTS

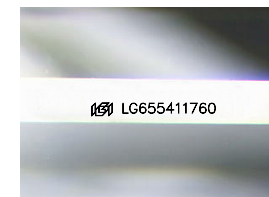
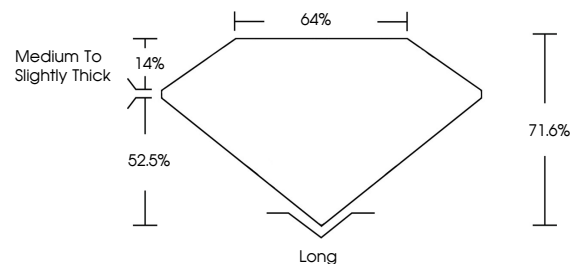
Carat Weight 1.08 CARAT  
Color Grade E  
Clarity Grade VVS 1

ADDITIONAL GRADING INFORMATION

Polish EXCELLENT  
Symmetry EXCELLENT  
Fluorescence NONE  
Inscription(s) IGI LG655411760

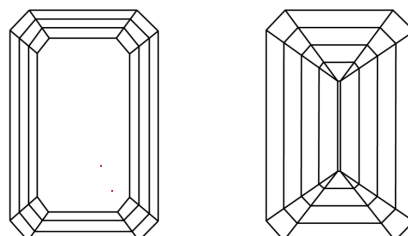
Comments: This Laboratory Grown Diamond was created by Chemical Vapor Deposition (CVD) growth process. Type IIa

PROPORTIONS



Sample Image Used

CLARITY CHARACTERISTICS



KEY TO SYMBOLS

Red symbols indicate internal characteristics.  
Green symbols indicate external characteristics.

COLOR

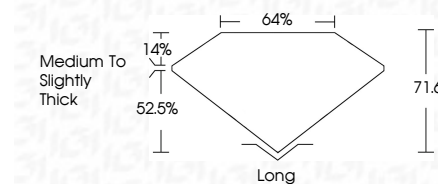
D E F G H I J Faint Very Light Light

CLARITY

IF	VS <sup>1-2</sup>	VS <sup>1-2</sup>	SI <sup>1-2</sup>	I <sup>1-3</sup>
Internally Flawless	Very Very Slightly Included	Very Slightly Included	Slightly Included	Included



September 30, 2024  
IGI Report Number LG655411760  
Description LABORATORY GROWN DIAMOND  
Shape and Cutting Style EMERALD CUT  
Measurements 6.48 X 4.79 X 3.43 MM  
GRADING RESULTS  
Carat Weight 1.08 CARAT  
Color Grade E  
Clarity Grade VVS 1



ADDITIONAL GRADING INFORMATION

Polish EXCELLENT  
Symmetry EXCELLENT  
Fluorescence NONE  
Inscription(s) IGI LG655411760  
Comments: This Laboratory Grown Diamond was created by Chemical Vapor Deposition (CVD) growth process. Type IIa



IGI



September 30, 2024  
IGI Report No. LG655411760  
EMERALD CUT  
6.48 X 4.79 X 3.43 MM  
1.08 CARAT  
E  
VVS 1  
71.6%  
64%  
52.5%  
14%  
Medium to Slightly Thick  
Long  
EXCELLENT  
EXCELLENT  
NONE  
IGI LG655411760  
Comments: This Laboratory Grown Diamond was created by Chemical Vapor Deposition (CVD) growth process. Type IIa