



ELECTRONIC COPY

LG655411796
Report verification at igi.org



September 30, 2024

IGI Report Number **LG655411796**

Description **LABORATORY GROWN DIAMOND**

Shape and Cutting Style **CUSHION BRILLIANT**

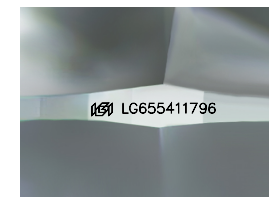
Measurements **7.49 X 5.26 X 3.43 MM**

GRADING RESULTS

Carat Weight **1.04 CARAT**

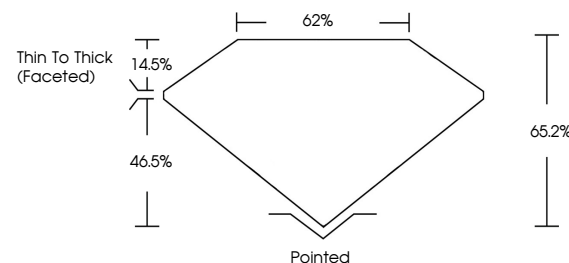
Color Grade **D**

Clarity Grade **VVS 2**

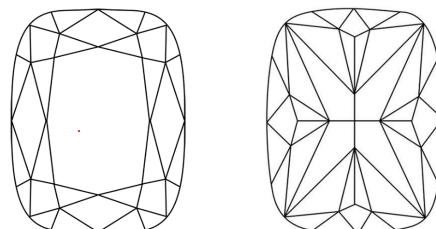


Sample Image Used

PROPORTIONS



CLARITY CHARACTERISTICS



KEY TO SYMBOLS

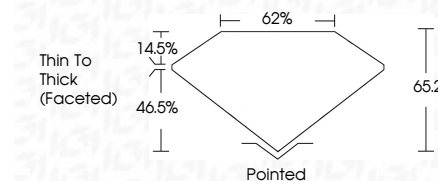
Red symbols indicate internal characteristics.
Green symbols indicate external characteristics.

COLOR

D E F G H I J Faint Very Light Light

CLARITY

IF	VS ¹⁻²	VS ¹⁻²	SI ¹⁻²	I ¹⁻³
Internally Flawless	Very Very Slightly Included	Very Slightly Included	Slightly Included	Included



ADDITIONAL GRADING INFORMATION

Polish **EXCELLENT**

Symmetry **EXCELLENT**

Fluorescence **NONE**

Inscription(s) **IGI LG655411796**

Comments: This Laboratory Grown Diamond was created by Chemical Vapor Deposition (CVD) growth process. Type IIa



IGI



September 30, 2024
IGI Report No LG655411796
CUSHION BRILLIANT
7.49 X 5.26 X 3.43 MM
1.04 CARAT
D
VVS 2
65.2%
62%
Thin To Thick (Faceted)
Pointed
EXCELLENT
EXCELLENT
NONE
IGI LG655411796
Comments: This Laboratory Grown Diamond was created by Chemical Vapor Deposition (CVD) growth process. Type IIa