



ELECTRONIC COPY

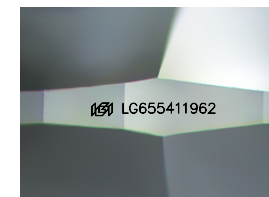
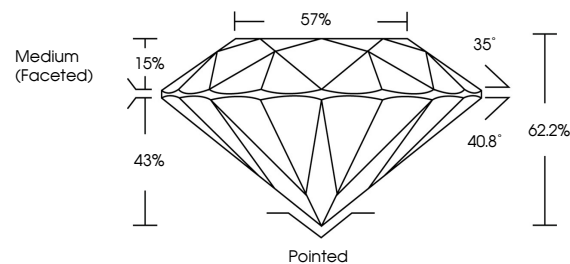
LG655411962
Report verification at igi.org



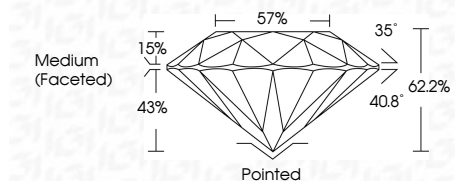
September 28, 2024
IGI Report Number: LG655411962
Description: LABORATORY GROWN DIAMOND
Shape and Cutting Style: ROUND BRILLIANT
Measurements: 7.41 - 7.44 X 4.62 MM
GRADING RESULTS
Carat Weight: 1.58 CARAT
Color Grade: E
Clarity Grade: VVS 2
Cut Grade: IDEAL

September 28, 2024
IGI Report Number: LG655411962
Description: LABORATORY GROWN DIAMOND
Shape and Cutting Style: ROUND BRILLIANT
Measurements: 7.41 - 7.44 X 4.62 MM

PROPORTIONS



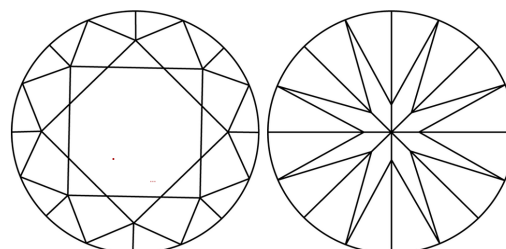
Sample Image Used



GRADING RESULTS

Carat Weight: 1.58 CARAT
Color Grade: E
Clarity Grade: VVS 2
Cut Grade: IDEAL

CLARITY CHARACTERISTICS



ADDITIONAL GRADING INFORMATION

Polish: EXCELLENT
Symmetry: EXCELLENT
Fluorescence: NONE
Inscription(s): IGI LG655411962

ADDITIONAL GRADING INFORMATION

Polish: EXCELLENT
Symmetry: EXCELLENT
Fluorescence: NONE
Inscription(s): IGI LG655411962
Comments: HEARTS & ARROWS
This Laboratory Grown Diamond was created by Chemical Vapor Deposition (CVD) growth process. Type IIa

Comments: HEARTS & ARROWS
This Laboratory Grown Diamond was created by Chemical Vapor Deposition (CVD) growth process. Type IIa

COLOR

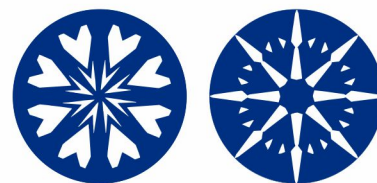
D E F G H I J Faint Very Light Light

CLARITY

IF VVS 1-2 VS 1-2 SI 1-2 I 1-3
Internally Flawless Very Very Slightly Included Very Slightly Included Slightly Included Included

KEY TO SYMBOLS

Red symbols indicate internal characteristics.
Green symbols indicate external characteristics.



September 28, 2024
IGI Report No. LG655411962
ROUND BRILLIANT
7.41 - 7.44 X 4.62 MM
1.58 CARAT
E
VVS 2
IDEAL
62.2%
57%
Medium (Faceted)
Pointed
EXCELLENT
EXCELLENT
NONE
IGI LG655411962
Comments: HEARTS & ARROWS
This Laboratory Grown Diamond was created by Chemical Vapor Deposition (CVD) growth process. Type IIa