



ELECTRONIC COPY

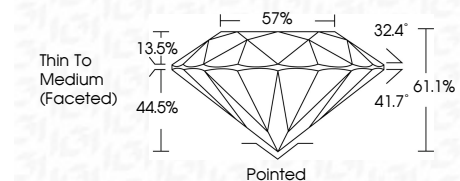
LG655412510
Report verification at igi.org



September 28, 2024
IGI Report Number: LG655412510
Description: LABORATORY GROWN DIAMOND
Shape and Cutting Style: ROUND BRILLIANT
Measurements: 9.41 - 9.43 X 5.76 MM

GRADING RESULTS

Carat Weight: 3.08 CARATS
Color Grade: E
Clarity Grade: VS 1
Cut Grade: EXCELLENT



ADDITIONAL GRADING INFORMATION

Polish: EXCELLENT
Symmetry: EXCELLENT
Fluorescence: NONE
Inscription(s): IGI LG655412510
Comments: This Laboratory Grown Diamond was created by Chemical Vapor Deposition (CVD) growth process. Type IIa



September 28, 2024
IGI Report No. LG655412510
ROUND BRILLIANT
9.41 - 9.43 X 5.76 MM
3.08 CARATS
E
VS 1
EXCELLENT
61.1%
57%
Thin To Medium (Faceted)
Pointed
EXCELLENT
EXCELLENT
NONE
IGI LG655412510
Comments: This Laboratory Grown Diamond was created by Chemical Vapor Deposition (CVD) growth process. Type IIa

September 28, 2024
IGI Report Number: LG655412510
Description: LABORATORY GROWN DIAMOND
Shape and Cutting Style: ROUND BRILLIANT
Measurements: 9.41 - 9.43 X 5.76 MM

GRADING RESULTS

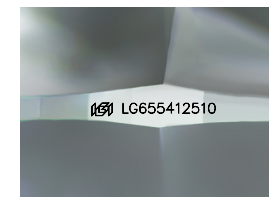
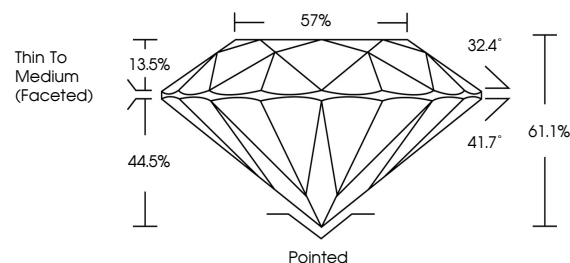
Carat Weight: 3.08 CARATS
Color Grade: E
Clarity Grade: VS 1
Cut Grade: EXCELLENT

ADDITIONAL GRADING INFORMATION

Polish: EXCELLENT
Symmetry: EXCELLENT
Fluorescence: NONE
Inscription(s): IGI LG655412510

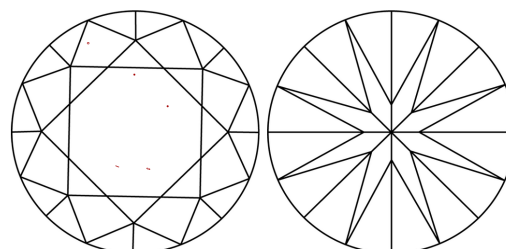
Comments: This Laboratory Grown Diamond was created by Chemical Vapor Deposition (CVD) growth process. Type IIa

PROPORTIONS



Sample Image Used

CLARITY CHARACTERISTICS



KEY TO SYMBOLS

Red symbols indicate internal characteristics.
Green symbols indicate external characteristics.

COLOR

D E F G H I J Faint Very Light Light

CLARITY

IF VS 1-2 VS 1-2 SI 1-2 I 1-3
Internally Flawless Very Very Slightly Included Very Slightly Included Slightly Included Included

