



ELECTRONIC COPY

LG655413285
Report verification at igi.org



September 28, 2024

IGI Report Number **LG655413285**

Description **LABORATORY GROWN DIAMOND**

Shape and Cutting Style **SQUARE EMERALD CUT**

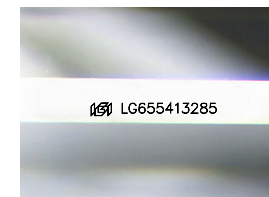
Measurements **6.09 X 5.89 X 3.81 MM**

GRADING RESULTS

Carat Weight **1.26 CARAT**

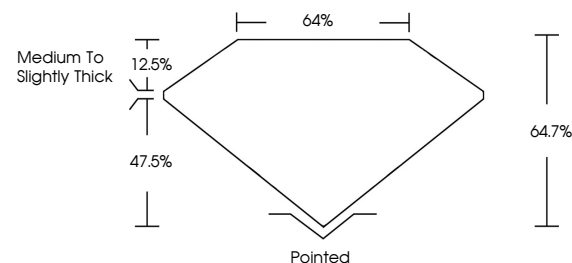
Color Grade **D**

Clarity Grade **VVS 1**

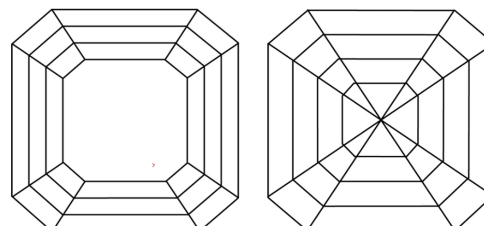


Sample Image Used

PROPORTIONS



CLARITY CHARACTERISTICS



KEY TO SYMBOLS

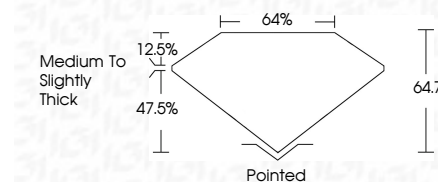
Red symbols indicate internal characteristics.
Green symbols indicate external characteristics.

COLOR

D E F G H I J Faint Very Light Light

CLARITY

IF	VS ¹⁻²	VS ¹⁻²	SI ¹⁻²	I ¹⁻³
Internally Flawless	Very Very Slightly Included	Very Slightly Included	Slightly Included	Included



ADDITIONAL GRADING INFORMATION

Polish **EXCELLENT**

Symmetry **EXCELLENT**

Fluorescence **NONE**

Inscription(s) **IGI LG655413285**

Comments: This Laboratory Grown Diamond was created by Chemical Vapor Deposition (CVD) growth process. Type IIa



IGI



September 28, 2024
IGI Report No LG655413285
SQUARE EMERALD CUT
6.09 X 5.89 X 3.81 MM
Carat Weight 1.26 CARAT
Color Grade D
Clarity Grade VVS 1
Table 12.5%
Depth 47.5%
Girdle 64%
Height 64.7%
Medium to Slightly Thick
Pointed
Polish EXCELLENT
Symmetry EXCELLENT
Fluorescence NONE
Inscription(s) IGI LG655413285

Comments: This Laboratory Grown Diamond was created by Chemical Vapor Deposition (CVD) growth process. Type IIa