



ELECTRONIC COPY

LG655413910
Report verification at igi.org



September 28, 2024

IGI Report Number LG655413910

Description LABORATORY GROWN DIAMOND

Shape and Cutting Style EMERALD CUT

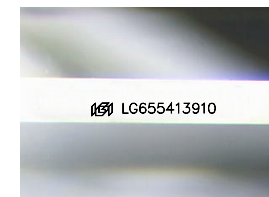
Measurements 7.20 X 5.22 X 3.48 MM

GRADING RESULTS

Carat Weight 1.23 CARAT

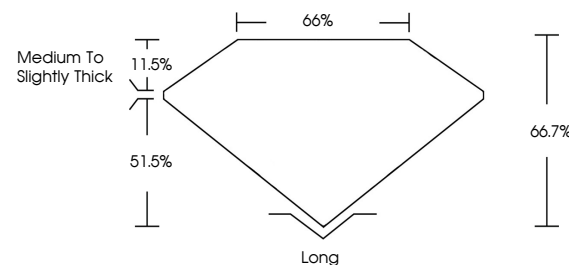
Color Grade D

Clarity Grade VS 1

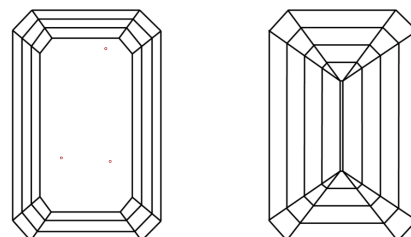


Sample Image Used

PROPORTIONS



CLARITY CHARACTERISTICS



KEY TO SYMBOLS

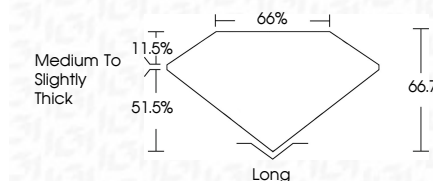
Red symbols indicate internal characteristics. Green symbols indicate external characteristics.

COLOR

D E F G H I J Faint Very Light Light

CLARITY

Table with 5 columns: IF, VS 1-2, VS 1-2, SI 1-2, I 1-3. Rows: Internally Flawless, Very Very Slightly Included, Very Slightly Included, Slightly Included, Included.



ADDITIONAL GRADING INFORMATION

Polish EXCELLENT

Symmetry EXCELLENT

Fluorescence NONE

Inscription(s) IGI LG655413910

Comments: This Laboratory Grown Diamond was created by Chemical Vapor Deposition (CVD) growth process. Type IIa



September 28, 2024
IGI Report Number LG655413910
Description LABORATORY GROWN DIAMOND
Shape and Cutting Style EMERALD CUT
Measurements 7.20 X 5.22 X 3.48 MM

GRADING RESULTS

Carat Weight 1.23 CARAT

Color Grade D

Clarity Grade VS 1

ADDITIONAL GRADING INFORMATION

Polish EXCELLENT

Symmetry EXCELLENT

Fluorescence NONE

Inscription(s) IGI LG655413910

Comments: This Laboratory Grown Diamond was created by Chemical Vapor Deposition (CVD) growth process. Type IIa

Certified SUSTAINABILITY RATED DIAMOND. SCS GLOBAL SERVICES. All certified diamonds come with an individual certificate, ONLY available at an accredited retailer. QR code and scan instruction.

September 28, 2024
IGI Report No. LG655413910
EMERALD CUT
7.20 X 5.22 X 3.48 MM
1.23 CARAT
Color Grade D
Clarity Grade VS 1
Depth 66.7%
Table 66%
Girdle Medium to Slightly Thick
Culet Long
Polish EXCELLENT
Symmetry EXCELLENT
Fluorescence NONE
Inscription(s) IGI LG655413910
Comments: This Laboratory Grown Diamond was created by Chemical Vapor Deposition (CVD) growth process. Type IIa