



ELECTRONIC COPY

LG655414813
Report verification at igi.org



October 1, 2024

IGI Report Number **LG655414813**

Description **LABORATORY GROWN DIAMOND**

Shape and Cutting Style **PRINCESS CUT**

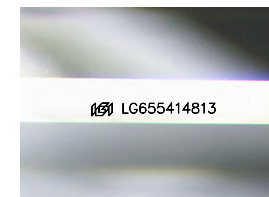
Measurements **7.15 X 7.10 X 4.84 MM**

GRADING RESULTS

Carat Weight **2.06 CARATS**

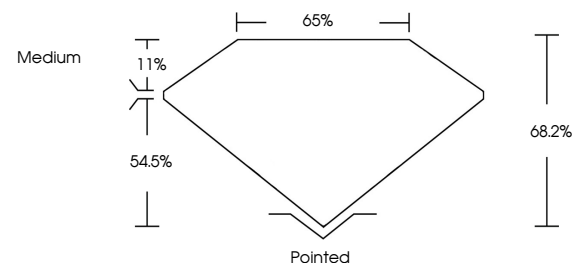
Color Grade **D**

Clarity Grade **VVS 2**

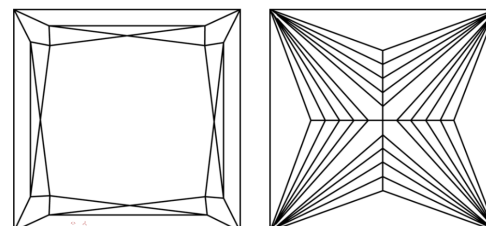


Sample Image Used

PROPORTIONS



CLARITY CHARACTERISTICS



KEY TO SYMBOLS

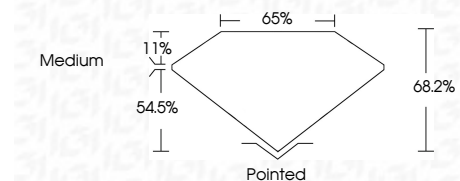
Red symbols indicate internal characteristics.
Green symbols indicate external characteristics.

COLOR

D E F G H I J Faint Very Light Light

CLARITY

IF	VS ¹⁻²	VS ¹⁻²	SI ¹⁻²	I ¹⁻³
Internally Flawless	Very Very Slightly Included	Very Slightly Included	Slightly Included	Included



ADDITIONAL GRADING INFORMATION

Polish **VERY GOOD**

Symmetry **EXCELLENT**

Fluorescence **NONE**

Inscription(s) **IGI LG655414813**

Comments: This Laboratory Grown Diamond was created by Chemical Vapor Deposition (CVD) growth process. Type IIa



October 1, 2024
IGI Report No LG655414813
PRINCESS CUT

2.06 CARATS
D

Carat Weight
Color Grade
Depth
Table
Girdle
Medium

Pointed
Polish
Symmetry
Fluorescence
Inscription(s)

VERY GOOD
EXCELLENT
NONE
IGI LG655414813

Comments: This Laboratory Grown Diamond was created by Chemical Vapor Deposition (CVD) growth process. Type IIa