



ELECTRONIC COPY

LG655414987
Report verification at igi.org



September 30, 2024

IGI Report Number **LG655414987**

Description **LABORATORY GROWN DIAMOND**

Shape and Cutting Style **CUT CORNERED
RECTANGULAR MODIFIED
BRILLIANT**

Measurements **10.68 X 7.46 X 4.95 MM**

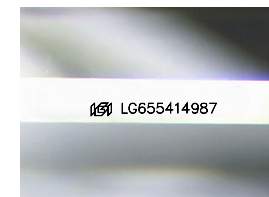
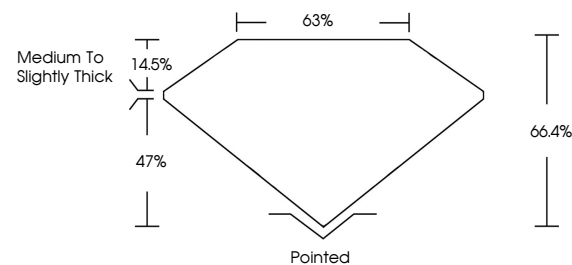
GRADING RESULTS

Carat Weight **3.54 CARATS**

Color Grade **E**

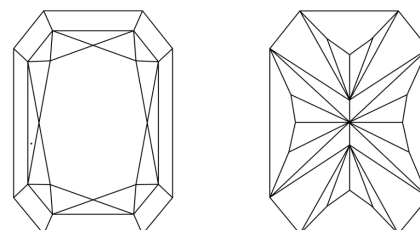
Clarity Grade **VVS 2**

PROPORTIONS



Sample Image Used

CLARITY CHARACTERISTICS



KEY TO SYMBOLS

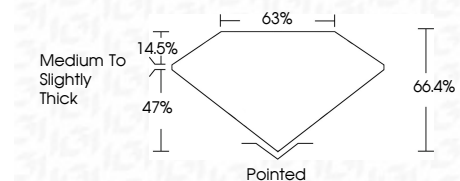
Red symbols indicate internal characteristics.
Green symbols indicate external characteristics.

COLOR

D E F G H I J Faint Very Light Light

CLARITY

IF	VS ¹⁻²	VS ¹⁻²	SI ¹⁻²	I ¹⁻³
Internally Flawless	Very Very Slightly Included	Very Slightly Included	Slightly Included	Included



ADDITIONAL GRADING INFORMATION

Polish **EXCELLENT**

Symmetry **EXCELLENT**

Fluorescence **NONE**

Inscription(s) **IGI LG655414987**

Comments: This Laboratory Grown Diamond was created by Chemical Vapor Deposition (CVD) growth process. Type IIa



IGI



September 30, 2024
IGI Report No LG655414987
CUT CORNERED RECT. MODIFIED BRILLIANT

10.68 X 7.46 X 4.95 MM

3.54 CARATS
E

Carat Weight
Color Grade
Clarity Grade
Table
Depth
Girdle

Medium to Slightly Thick
Pointed
EXCELLENT
EXCELLENT
NONE
IGI LG655414987

Comments: This Laboratory Grown Diamond was created by Chemical Vapor Deposition (CVD) growth process. Type IIa