



ELECTRONIC COPY

LG655414990
Report verification at igi.org

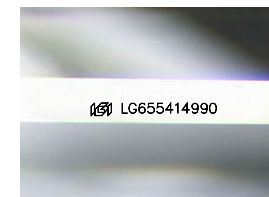


September 30, 2024
IGI Report Number **LG655414990**
Description **LABORATORY GROWN DIAMOND**
Shape and Cutting Style **CUT CORNERED
RECTANGULAR MODIFIED
BRILLIANT**

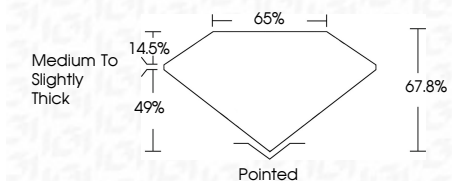
Measurements **10.74 X 7.42 X 5.03 MM**

GRADING RESULTS

Carat Weight **3.60 CARATS**
Color Grade **D**
Clarity Grade **VS 1**



Sample Image Used



ADDITIONAL GRADING INFORMATION

Polish **EXCELLENT**
Symmetry **EXCELLENT**
Fluorescence **NONE**
Inscription(s) **IGI LG655414990**
Comments: This Laboratory Grown Diamond was created by Chemical Vapor Deposition (CVD) growth process. Type IIa



September 30, 2024
IGI Report No LG655414990
CUT CORNERED RECT. MODIFIED BRILLIANT
10.74 X 7.42 X 5.03 MM
3.60 CARATS
D
VS 1
67.8%
49%
Medium to Slightly Thick
Pointed
EXCELLENT
EXCELLENT
NONE
IGI LG655414990
Comments: This Laboratory Grown Diamond was created by Chemical Vapor Deposition (CVD) growth process. Type IIa

LABORATORY GROWN DIAMOND REPORT

September 30, 2024
IGI Report Number **LG655414990**
Description **LABORATORY GROWN DIAMOND**
Shape and Cutting Style **CUT CORNERED RECTANGULAR
MODIFIED BRILLIANT**
Measurements **10.74 X 7.42 X 5.03 MM**

GRADING RESULTS

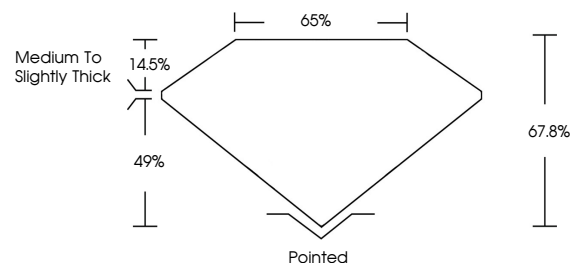
Carat Weight **3.60 CARATS**
Color Grade **D**
Clarity Grade **VS 1**

ADDITIONAL GRADING INFORMATION

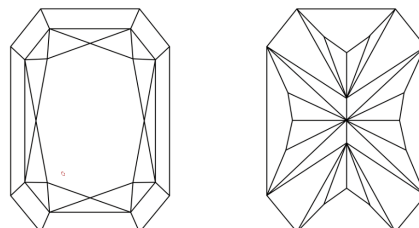
Polish **EXCELLENT**
Symmetry **EXCELLENT**
Fluorescence **NONE**
Inscription(s) **IGI LG655414990**

Comments: This Laboratory Grown Diamond was created by Chemical Vapor Deposition (CVD) growth process. Type IIa

PROPORTIONS



CLARITY CHARACTERISTICS



KEY TO SYMBOLS

Red symbols indicate internal characteristics.
Green symbols indicate external characteristics.

COLOR

D E F G H I J Faint Very Light Light

CLARITY

IF	VS 1-2	VS 1-2	SI 1-2	I 1-3
Internally Flawless	Very Very Slightly Included	Very Slightly Included	Slightly Included	Included

