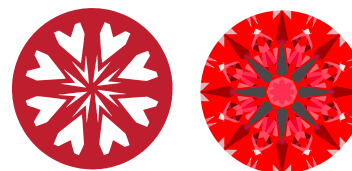




Light Performance Grade: Exceptional



Ideal-Scope representation

Low Moderate High Superior Exceptional

Light Performance



COLOR

D E F G H I J Faint Very Light Light

CLARITY

Table with 5 columns: IF, VS 1-2, VS 1-2, SI 1-2, I 1-3. Rows: Internally Flawless, Very Very Slightly Included, Very Slightly Included, Slightly Included, Included

ELECTRONIC COPY

LABORATORY GROWN DIAMOND REPORT

September 28, 2024 IGI Report Number LG655419308 Description LABORATORY GROWN DIAMOND Shape and Cutting Style ROUND BRILLIANT Measurements 8.25 - 8.30 x 5.06 mm

GRADING RESULTS

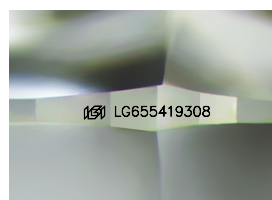
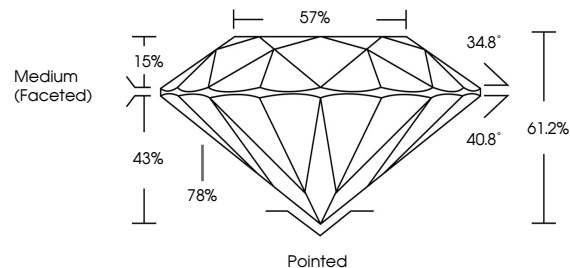
Carat Weight 2.12 CARATS Color Grade D Clarity Grade VS 1 Cut Grade IDEAL

ADDITIONAL GRADING INFORMATION

Polish EXCELLENT Symmetry EXCELLENT Fluorescence NONE Inscription(s) LG655419308

Comments: HEARTS & ARROWS This Laboratory Grown Diamond was created by Chemical Vapor Deposition (CVD) growth process. Type IIa

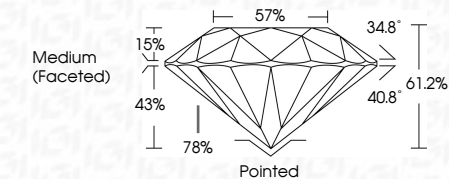
PROPORTIONS



Sample Image Used



September 28, 2024 IGI Report Number LG655419308 Description LABORATORY GROWN DIAMOND Shape and Cutting Style ROUND BRILLIANT Measurements 8.25 - 8.30 X 5.06 MM GRADING RESULTS Carat Weight 2.12 CARATS Color Grade D Clarity Grade VS 1 Cut Grade IDEAL



ADDITIONAL GRADING INFORMATION

Polish EXCELLENT Symmetry EXCELLENT Fluorescence NONE Inscription(s) LG655419308 Comments: HEARTS & ARROWS This Laboratory Grown Diamond was created by Chemical Vapor Deposition (CVD) growth process. Type IIa



September 28, 2024 IGI Report No. LG655419308 ROUND BRILLIANT 2.12 CARATS D 8.25 - 8.30 X 5.06 MM Carat Weight IDEAL VS 1 Color Grade EXCELLENT 61.2% Depth 57% Table Medium (Faceted) Girdle Pointed Polish EXCELLENT Symmetry EXCELLENT Fluorescence NONE Inscription(s) LG655419308 Comments: HEARTS & ARROWS This Laboratory Grown Diamond was created by Chemical Vapor Deposition (CVD) growth process. Type IIa