



ELECTRONIC COPY

LG655422707 Report verification at igi.org



October 1, 2024
IGI Report Number LG655422707
Description LABORATORY GROWN DIAMOND
Shape and Cutting Style CUT CORNERED RECTANGULAR MODIFIED BRILLIANT
Measurements 11.76 X 7.84 X 5.33 MM
GRADING RESULTS
Carat Weight 4.13 CARATS
Color Grade G
Clarity Grade VS 1

LABORATORY GROWN DIAMOND REPORT

October 1, 2024
IGI Report Number LG655422707
Description LABORATORY GROWN DIAMOND
Shape and Cutting Style CUT CORNERED RECTANGULAR MODIFIED BRILLIANT
Measurements 11.76 X 7.84 X 5.33 MM

GRADING RESULTS

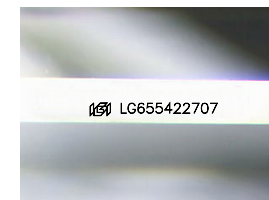
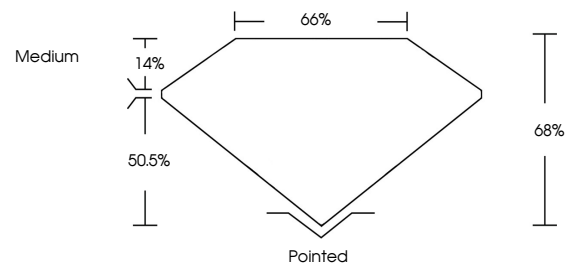
Carat Weight 4.13 CARATS
Color Grade G
Clarity Grade VS 1

ADDITIONAL GRADING INFORMATION

Polish EXCELLENT
Symmetry EXCELLENT
Fluorescence NONE
Inscription(s) IGI LG655422707

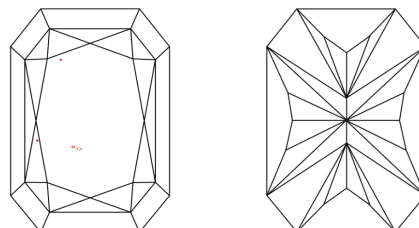
Comments: This Laboratory Grown Diamond was created by Chemical Vapor Deposition (CVD) growth process. Type IIa

PROPORTIONS



Sample Image Used

CLARITY CHARACTERISTICS



KEY TO SYMBOLS

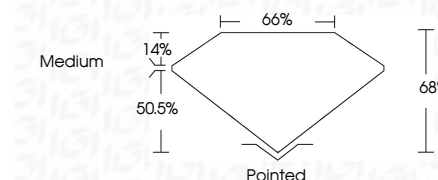
Red symbols indicate internal characteristics.
Green symbols indicate external characteristics.

COLOR

D E F G H I J Faint Very Light Light

CLARITY

Table with 5 columns: IF, VS 1-2, VS 1-2, SI 1-2, I 1-3. Rows: Internally Flawless, Very Very Slightly Included, Very Slightly Included, Slightly Included, Included



ADDITIONAL GRADING INFORMATION

Polish EXCELLENT
Symmetry EXCELLENT
Fluorescence NONE
Inscription(s) IGI LG655422707
Comments: This Laboratory Grown Diamond was created by Chemical Vapor Deposition (CVD) growth process. Type IIa



Vertical text block containing report details: October 1, 2024, IGI Report No LG655422707, CUT CORNERED RECT. MODIFIED BRILLIANT, 4.13 CARATS, G, 11.76 X 7.84 X 5.33 MM, VS 1, 66%, 50.5%, Medium, Pointed, EXCELLENT, EXCELLENT, NONE, IGI LG655422707. Includes a QR code and a comment about the CVD growth process.