



**ELECTRONIC COPY**

LG655423316  
Report verification at igi.org



October 3, 2024  
IGI Report Number **LG655423316**  
Description **LABORATORY GROWN DIAMOND**  
Shape and Cutting Style **SQUARE CUSHION BRILLIANT**  
Measurements **7.26 X 7.14 X 4.54 MM**  
**GRADING RESULTS**  
Carat Weight **2.20 CARATS**  
Color Grade **D**  
Clarity Grade **VVS 2**

**LABORATORY GROWN DIAMOND REPORT**

October 3, 2024  
IGI Report Number **LG655423316**  
Description **LABORATORY GROWN DIAMOND**  
Shape and Cutting Style **SQUARE CUSHION BRILLIANT**  
Measurements **7.26 X 7.14 X 4.54 MM**

**GRADING RESULTS**

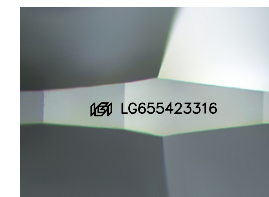
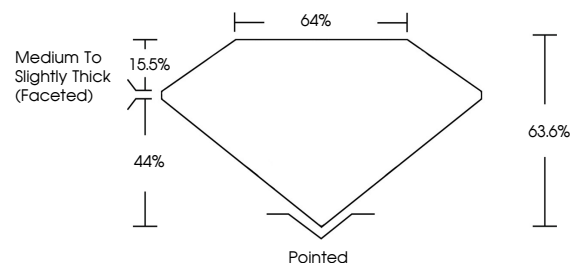
Carat Weight **2.20 CARATS**  
Color Grade **D**  
Clarity Grade **VVS 2**

**ADDITIONAL GRADING INFORMATION**

Polish **EXCELLENT**  
Symmetry **EXCELLENT**  
Fluorescence **NONE**  
Inscription(s) **IGI LG655423316**

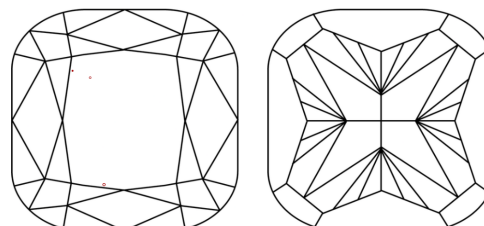
Comments: This Laboratory Grown Diamond was created by Chemical Vapor Deposition (CVD) growth process.  
Type IIa

**PROPORTIONS**



Sample Image Used

**CLARITY CHARACTERISTICS**



**KEY TO SYMBOLS**

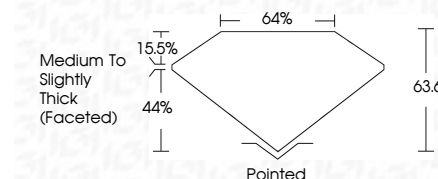
Red symbols indicate internal characteristics.  
Green symbols indicate external characteristics.

**COLOR**

D E F G H I J Faint Very Light Light

**CLARITY**

IF	VS <sup>1-2</sup>	VS <sup>1-2</sup>	SI <sup>1-2</sup>	I <sup>1-3</sup>
Internally Flawless	Very Very Slightly Included	Very Slightly Included	Slightly Included	Included



**ADDITIONAL GRADING INFORMATION**

Polish **EXCELLENT**  
Symmetry **EXCELLENT**  
Fluorescence **NONE**  
Inscription(s) **IGI LG655423316**  
Comments: This Laboratory Grown Diamond was created by Chemical Vapor Deposition (CVD) growth process.  
Type IIa



**IGI**

October 3, 2024  
IGI Report No **LG655423316**  
**SQUARE CUSHION BRILLIANT**  
**7.26 X 7.14 X 4.54 MM**  
2.20 CARATS  
D  
2.20 CARATS  
D  
VVS 2  
63.6%  
44%  
15.5%  
64%  
Pointed  
EXCELLENT  
EXCELLENT  
NONE  
IGI LG655423316

Comments: This Laboratory Grown Diamond was created by Chemical Vapor Deposition (CVD) growth process.  
Type IIa