



ELECTRONIC COPY

LG655423515
Report verification at igi.org



October 1, 2024
IGI Report Number: LG655423515
Description: LABORATORY GROWN DIAMOND
Shape and Cutting Style: CUT CORNERED RECTANGULAR MODIFIED BRILLIANT
Measurements: 8.79 X 6.03 X 4.13 MM
GRADING RESULTS
Carat Weight: 1.91 CARAT
Color Grade: D
Clarity Grade: VS 1

LABORATORY GROWN DIAMOND REPORT

October 1, 2024
IGI Report Number: LG655423515
Description: LABORATORY GROWN DIAMOND
Shape and Cutting Style: CUT CORNERED RECTANGULAR MODIFIED BRILLIANT
Measurements: 8.79 X 6.03 X 4.13 MM

GRADING RESULTS

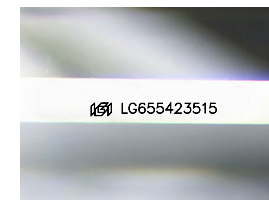
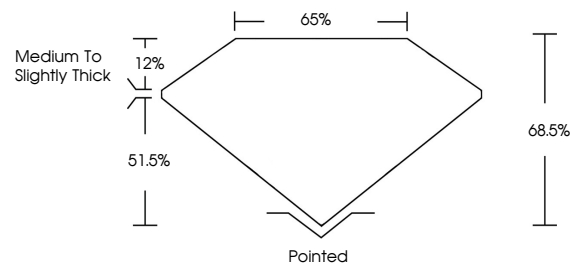
Carat Weight: 1.91 CARAT
Color Grade: D
Clarity Grade: VS 1

ADDITIONAL GRADING INFORMATION

Polish: EXCELLENT
Symmetry: EXCELLENT
Fluorescence: NONE
Inscription(s): IGI LG655423515

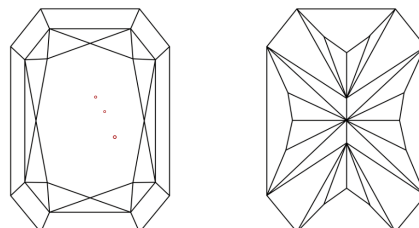
Comments: This Laboratory Grown Diamond was created by Chemical Vapor Deposition (CVD) growth process. Type IIa

PROPORTIONS



Sample Image Used

CLARITY CHARACTERISTICS



KEY TO SYMBOLS

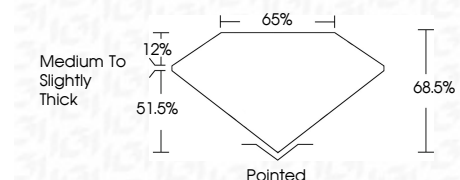
Red symbols indicate internal characteristics.
Green symbols indicate external characteristics.

COLOR

D E F G H I J Faint Very Light Light

CLARITY

Table mapping clarity grades (IF, VVS, VS, SI, I) to descriptions (Internally Flawless, Very Very Slightly Included, etc.)



ADDITIONAL GRADING INFORMATION

Polish: EXCELLENT
Symmetry: EXCELLENT
Fluorescence: NONE
Inscription(s): IGI LG655423515
Comments: This Laboratory Grown Diamond was created by Chemical Vapor Deposition (CVD) growth process. Type IIa



October 1, 2024
IGI Report No: LG655423515
CUT CORNERED RECT. MODIFIED BRILLIANT
8.79 X 6.03 X 4.13 MM
1.91 CARAT
D
VS 1
68.5%
65%
Medium to Slightly Thick
Pointed
EXCELLENT
EXCELLENT
NONE
IGI LG655423515
Comments: This Laboratory Grown Diamond was created by Chemical Vapor Deposition (CVD) growth process. Type IIa