



ELECTRONIC COPY

LG655423527 Report verification at igi.org



October 1, 2024
IGI Report Number LG655423527
Description LABORATORY GROWN DIAMOND
Shape and Cutting Style CUT CORNERED RECTANGULAR MODIFIED BRILLIANT
Measurements 8.43 X 5.64 X 3.87 MM
GRADING RESULTS
Carat Weight 1.60 CARAT
Color Grade F
Clarity Grade VVS 1

LABORATORY GROWN DIAMOND REPORT

October 1, 2024
IGI Report Number LG655423527
Description LABORATORY GROWN DIAMOND
Shape and Cutting Style CUT CORNERED RECTANGULAR MODIFIED BRILLIANT
Measurements 8.43 X 5.64 X 3.87 MM

GRADING RESULTS

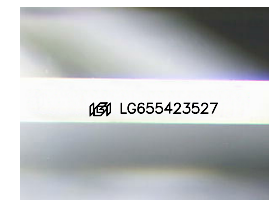
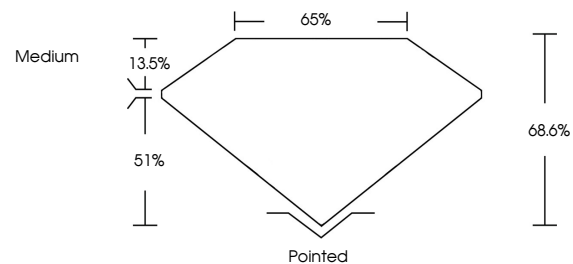
Carat Weight 1.60 CARAT
Color Grade F
Clarity Grade VVS 1

ADDITIONAL GRADING INFORMATION

Polish EXCELLENT
Symmetry EXCELLENT
Fluorescence NONE
Inscription(s) LG655423527

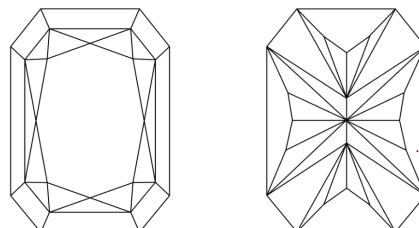
Comments: This Laboratory Grown Diamond was created by Chemical Vapor Deposition (CVD) growth process. Type IIa

PROPORTIONS



Sample Image Used

CLARITY CHARACTERISTICS



KEY TO SYMBOLS

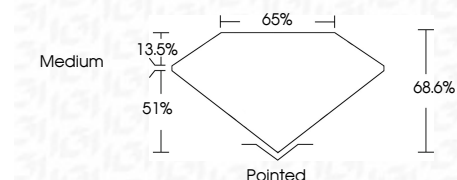
Red symbols indicate internal characteristics. Green symbols indicate external characteristics.

COLOR

D E F G H I J Faint Very Light Light

CLARITY

Table mapping clarity grades (IF, VVS, VS, SI, I) to descriptions (Internally Flawless, Very Very Slightly Included, etc.)



ADDITIONAL GRADING INFORMATION

Polish EXCELLENT
Symmetry EXCELLENT
Fluorescence NONE
Inscription(s) LG655423527
Comments: This Laboratory Grown Diamond was created by Chemical Vapor Deposition (CVD) growth process. Type IIa



October 1, 2024
IGI Report No LG655423527
CUT CORNERED RECT. MODIFIED BRILLIANT
8.43 X 5.64 X 3.87 MM
1.60 CARAT F
VVS 1
68.6%
51%
65%
Medium
Pointed
EXCELLENT
EXCELLENT
NONE
Inscription(s) LG655423527

Comments: This Laboratory Grown Diamond was created by Chemical Vapor Deposition (CVD) growth process. Type IIa