



ELECTRONIC COPY

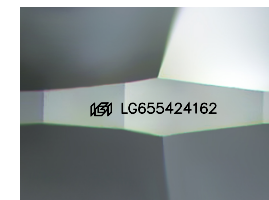
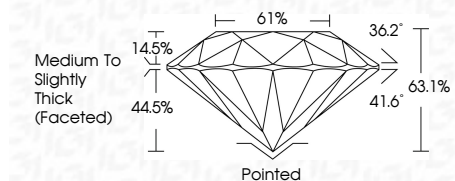
LG655424162
Report verification at igi.org



October 1, 2024
IGI Report Number: LG655424162
Description: LABORATORY GROWN DIAMOND
Shape and Cutting Style: ROUND BRILLIANT
Measurements: 7.31 - 7.37 X 4.64 MM

GRADING RESULTS

Carat Weight: 1.57 CARAT
Color Grade: E
Clarity Grade: VVS 2
Cut Grade: EXCELLENT



Sample Image Used

ADDITIONAL GRADING INFORMATION

Polish: EXCELLENT
Symmetry: EXCELLENT
Fluorescence: NONE
Inscription(s): IGI LG655424162
Comments: This Laboratory Grown Diamond was created by Chemical Vapor Deposition (CVD) growth process. Type IIa



October 1, 2024
IGI Report No LG655424162
ROUND BRILLIANT
1.57 CARAT E
VVS 2 EXCELLENT
7.31 - 7.37 X 4.64 MM
63.1% 61%
Medium To Slightly Thick (Faceted)
Pointed EXCELLENT EXCELLENT NONE
IGI LG655424162
Comments: This Laboratory Grown Diamond was created by Chemical Vapor Deposition (CVD) growth process. Type IIa

October 1, 2024
IGI Report Number: LG655424162
Description: LABORATORY GROWN DIAMOND
Shape and Cutting Style: ROUND BRILLIANT
Measurements: 7.31 - 7.37 X 4.64 MM

GRADING RESULTS

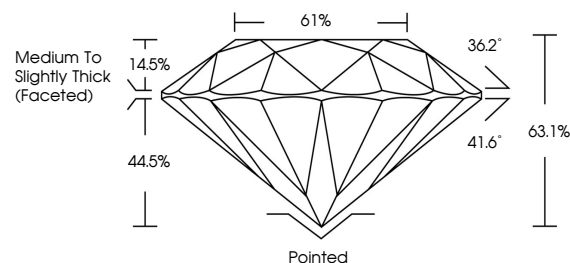
Carat Weight: 1.57 CARAT
Color Grade: E
Clarity Grade: VVS 2
Cut Grade: EXCELLENT

ADDITIONAL GRADING INFORMATION

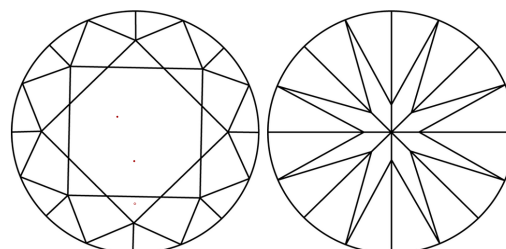
Polish: EXCELLENT
Symmetry: EXCELLENT
Fluorescence: NONE
Inscription(s): IGI LG655424162

Comments: This Laboratory Grown Diamond was created by Chemical Vapor Deposition (CVD) growth process. Type IIa

PROPORTIONS



CLARITY CHARACTERISTICS



KEY TO SYMBOLS

Red symbols indicate internal characteristics.
Green symbols indicate external characteristics.

COLOR

D E F G H I J Faint Very Light Light

CLARITY

IF VVS 1-2 VS 1-2 SI 1-2 I 1-3
Internally Flawless Very Very Slightly Included Very Slightly Included Slightly Included Included

