



ELECTRONIC COPY

LABORATORY GROWN DIAMOND REPORT

September 30, 2024  
IGI Report Number LG655424170  
Description LABORATORY GROWN DIAMOND  
Shape and Cutting Style PRINCESS CUT  
Measurements 7.01 X 6.94 X 4.91 MM

GRADING RESULTS

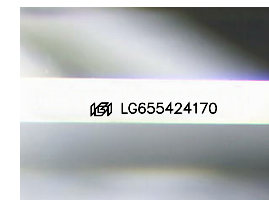
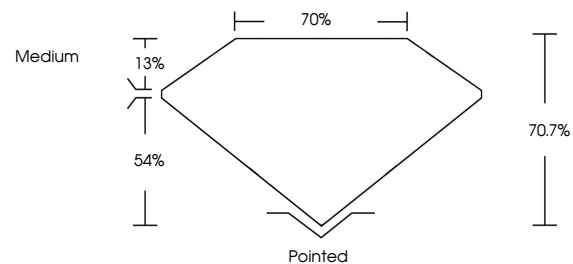
Carat Weight 2.21 CARATS  
Color Grade F  
Clarity Grade VS 1

ADDITIONAL GRADING INFORMATION

Polish EXCELLENT  
Symmetry EXCELLENT  
Fluorescence NONE  
Inscription(s) IGI LG655424170

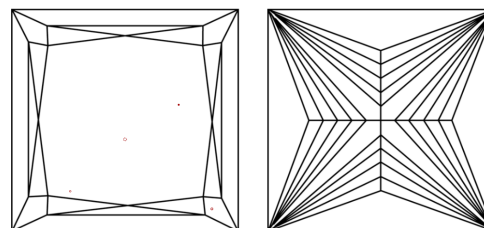
Comments: This Laboratory Grown Diamond was created by Chemical Vapor Deposition (CVD) growth process. Type IIa

PROPORTIONS



Sample Image Used

CLARITY CHARACTERISTICS



KEY TO SYMBOLS

Red symbols indicate internal characteristics.  
Green symbols indicate external characteristics.

COLOR

D E F G H I J Faint Very Light Light

CLARITY

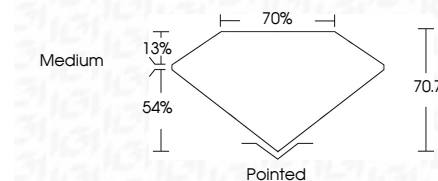
IF VS 1-2 VS 1-2 SI 1-2 I 1-3  
Internally Flawless Very Very Slightly Included Very Slightly Included Slightly Included Included



September 30, 2024  
IGI Report Number LG655424170  
Description LABORATORY GROWN DIAMOND  
Shape and Cutting Style PRINCESS CUT  
Measurements 7.01 X 6.94 X 4.91 MM

GRADING RESULTS

Carat Weight 2.21 CARATS  
Color Grade F  
Clarity Grade VS 1



ADDITIONAL GRADING INFORMATION

Polish EXCELLENT  
Symmetry EXCELLENT  
Fluorescence NONE  
Inscription(s) IGI LG655424170  
Comments: This Laboratory Grown Diamond was created by Chemical Vapor Deposition (CVD) growth process. Type IIa



IGI



September 30, 2024  
IGI Report No LG655424170  
PRINCESS CUT  
2.21 CARATS F  
Carat Weight 7.01 X 6.94 X 4.91 MM  
Color Grade VS 1  
Clarity Grade 70.7%  
Table 70%  
Girdle Medium  
Pointed  
Culet EXCELLENT  
Polish EXCELLENT  
Symmetry EXCELLENT  
Fluorescence NONE  
Inscription(s) IGI LG655424170  
Comments: This Laboratory Grown Diamond was created by Chemical Vapor Deposition (CVD) growth process. Type IIa