



**INTERNATIONAL
GEMOLOGICAL
INSTITUTE**

ELECTRONIC COPY



September 30, 2024

IGI Report Number **LG655424576**

ROUND BRILLIANT

LABORATORY GROWN DIAMOND

4.88 - 4.92 X 2.98 MM

Carat Weight **0.43 CARAT**

Color Grade **D**

Clarity Grade **VVS 1**

Cut Grade **IDEAL**

Polish **EXCELLENT**

Symmetry **EXCELLENT**

Fluorescence **NONE**

Inscription(s) **IGI LG655424576**

Comments: HEARTS & ARROWS This

Laboratory Grown Diamond was

created by Chemical Vapor

Deposition (CVD) growth process.

Type Iia

LABORATORY GROWN DIAMOND REPORT

September 30, 2024

IGI Report Number **LG655424576**

Description **LABORATORY GROWN DIAMOND**

Shape and Cutting Style **ROUND BRILLIANT**

Measurements **4.88 - 4.92 X 2.98 MM**

GRADING RESULTS

Carat Weight **0.43 CARAT**

Color Grade **D**

Clarity Grade **VVS 1**

Cut Grade **IDEAL**

ADDITIONAL GRADING INFORMATION

Polish **EXCELLENT**

Symmetry **EXCELLENT**

Fluorescence **NONE**

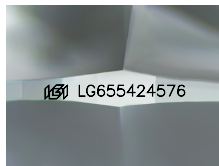
Inscription(s) **IGI LG655424576**

Comments: HEARTS & ARROWS

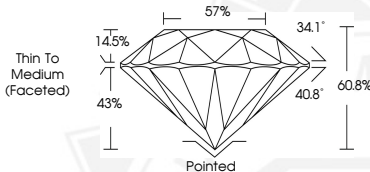
This Laboratory Grown Diamond was created by Chemical Vapor

Deposition (CVD) growth process.

Type Iia



Sample Image Used



HEARTS & ARROWS



September 30, 2024

IGI Report Number **LG655424576**

ROUND BRILLIANT

LABORATORY GROWN DIAMOND

4.88 - 4.92 X 2.98 MM

Carat Weight **0.43 CARAT**

Color Grade **D**

Clarity Grade **VVS 1**

Cut Grade **IDEAL**

Polish **EXCELLENT**

Symmetry **EXCELLENT**

Fluorescence **NONE**

Inscription(s) **IGI LG655424576**

Comments: HEARTS & ARROWS This

Laboratory Grown Diamond was

created by Chemical Vapor

Deposition (CVD) growth process.

Type Iia

THIS DOCUMENT WAS PRODUCED WITH THE FOLLOWING SECURITY MEASURES: SPECIAL DOCUMENT PAPER, INK SCREENS, WATERMARK, BACKGROUND DESIGNS, HOLOGRAM AND OTHER SECURITY FEATURES NOT LISTED AND DO EXCEED DOCUMENT SECURITY INDUSTRY GUIDELINES.

For terms & conditions and to verify this report, please visit www.igi.org