



ELECTRONIC COPY

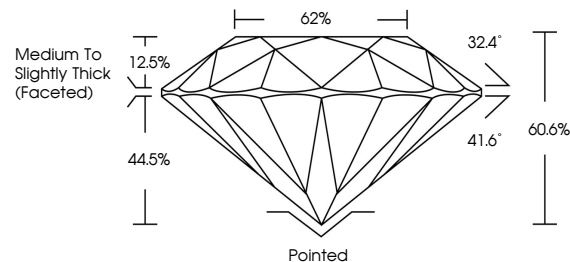
LG655424717
Report verification at igi.org



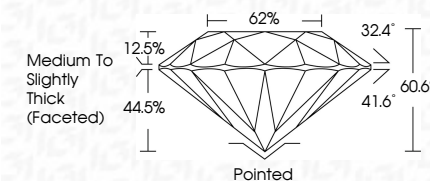
September 29, 2024
IGI Report Number LG655424717
Description LABORATORY GROWN DIAMOND
Shape and Cutting Style ROUND BRILLIANT
Measurements 8.12 - 8.15 X 4.93 MM
GRADING RESULTS
Carat Weight 2.01 CARATS
Color Grade E
Clarity Grade VS 1
Cut Grade EXCELLENT

September 29, 2024
IGI Report Number LG655424717
Description LABORATORY GROWN DIAMOND
Shape and Cutting Style ROUND BRILLIANT
Measurements 8.12 - 8.15 X 4.93 MM
GRADING RESULTS
Carat Weight 2.01 CARATS
Color Grade E
Clarity Grade VS 1
Cut Grade EXCELLENT

PROPORTIONS



Sample Image Used



ADDITIONAL GRADING INFORMATION

Polish EXCELLENT
Symmetry EXCELLENT
Fluorescence NONE
Inscription(s) IGI LG655424717

ADDITIONAL GRADING INFORMATION

Polish EXCELLENT
Symmetry EXCELLENT
Fluorescence NONE
Inscription(s) IGI LG655424717
Comments: This Laboratory Grown Diamond was created by Chemical Vapor Deposition (CVD) growth process. Type IIa

COLOR

D E F G H I J Faint Very Light Light

CLARITY

IF VS 1-2 VS 1-2 SI 1-2 I 1-3
Internally Flawless Very Very Slightly Included Very Slightly Included Slightly Included Included



September 29, 2024
IGI Report No LG655424717
ROUND BRILLIANT
8.12 - 8.15 X 4.93 MM
2.01 CARATS E
Color Grade EXCELLENT
Clarity Grade VS 1
Depth 60.6%
Table 62%
Girdle Medium To Slightly Thick (Faceted)
Culet Pointed
Polish EXCELLENT
Symmetry EXCELLENT
Fluorescence NONE
Inscriptions(s) IGI LG655424717
Comments: This Laboratory Grown Diamond was created by Chemical Vapor Deposition (CVD) growth process. Type IIa