



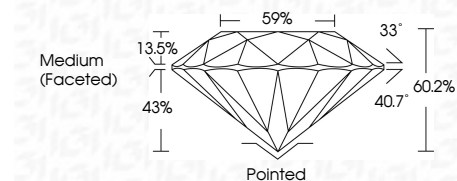
ELECTRONIC COPY

LG655426956 Report verification at igi.org



October 3, 2024 IGI Report Number LG655426956 Description LABORATORY GROWN DIAMOND Shape and Cutting Style ROUND BRILLIANT Measurements 6.55 - 6.57 X 3.95 MM

GRADING RESULTS Carat Weight 1.04 CARAT Color Grade E Clarity Grade VS 1 Cut Grade IDEAL



ADDITIONAL GRADING INFORMATION Polish EXCELLENT Symmetry EXCELLENT Fluorescence NONE Inscription(s) LG655426956 Comments: As Grown - No indication of post-growth treatment. This Laboratory Grown Diamond was created by High Pressure High Temperature (HPHT) growth process. Type II



October 3, 2024 IGI Report No LG655426956 ROUND BRILLIANT 6.55 - 6.57 X 3.95 MM 1.04 CARAT E VS 1 IDEAL 60.2% 59% Medium (Faceted) Pointed EXCELLENT EXCELLENT NONE NONE LG655426956

Comments: As Grown - No indication of post-growth treatment. This Laboratory Grown Diamond was created by High Pressure High Temperature (HPHT) growth process. Type II

LABORATORY GROWN DIAMOND REPORT

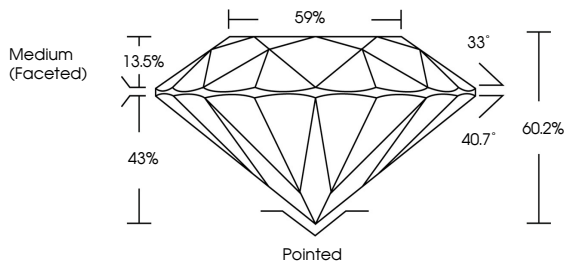
October 3, 2024 IGI Report Number LG655426956 Description LABORATORY GROWN DIAMOND Shape and Cutting Style ROUND BRILLIANT Measurements 6.55 - 6.57 X 3.95 MM

GRADING RESULTS Carat Weight 1.04 CARAT Color Grade E Clarity Grade VS 1 Cut Grade IDEAL

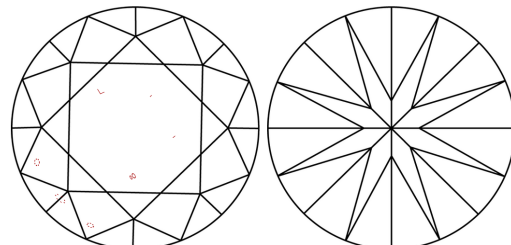
ADDITIONAL GRADING INFORMATION Polish EXCELLENT Symmetry EXCELLENT Fluorescence NONE Inscription(s) LG655426956

Comments: As Grown - No indication of post-growth treatment. This Laboratory Grown Diamond was created by High Pressure High Temperature (HPHT) growth process. Type II

PROPORTIONS



CLARITY CHARACTERISTICS

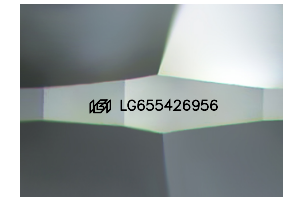


KEY TO SYMBOLS Red symbols indicate internal characteristics. Green symbols indicate external characteristics.

Table with 10 columns: D, E, F, G, H, I, J, Faint, Very Light, Light

Table with 5 columns: IF, VS 1-2, VS 1-2, SI 1-2, I 1-3

Table with 5 columns: Internally Flawless, Very Very Slightly Included, Very Slightly Included, Slightly Included, Included



Sample Image Used

