



ELECTRONIC COPY

LABORATORY GROWN DIAMOND REPORT

September 30, 2024
IGI Report Number LG655427604
Description LABORATORY GROWN DIAMOND
Shape and Cutting Style CUT CORNERED RECTANGULAR MODIFIED BRILLIANT
Measurements 8.98 X 6.19 X 4.02 MM

GRADING RESULTS

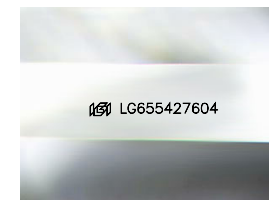
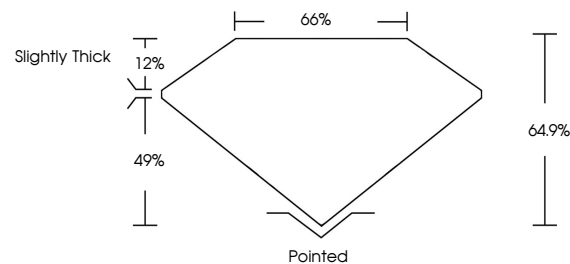
Carat Weight 1.98 CARAT
Color Grade D
Clarity Grade VS 1

ADDITIONAL GRADING INFORMATION

Polish EXCELLENT
Symmetry EXCELLENT
Fluorescence NONE
Inscription(s) IGI LG655427604

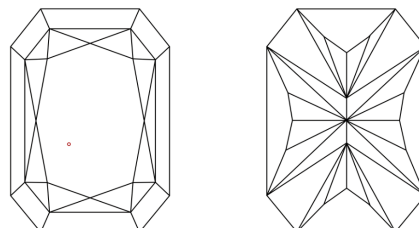
Comments: This Laboratory Grown Diamond was created by Chemical Vapor Deposition (CVD) growth process.
Type IIa

PROPORTIONS



Sample Image Used

CLARITY CHARACTERISTICS



KEY TO SYMBOLS

Red symbols indicate internal characteristics.
Green symbols indicate external characteristics.

COLOR

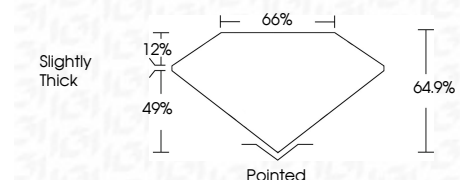
D E F G H I J Faint Very Light Light

CLARITY

IF WVS 1-2 VS 1-2 SI 1-2 I 1-3
Internally Flawless Very Very Slightly Included Very Slightly Included Slightly Included Included



September 30, 2024
IGI Report Number LG655427604
Description LABORATORY GROWN DIAMOND
Shape and Cutting Style CUT CORNERED RECTANGULAR MODIFIED BRILLIANT
Measurements 8.98 X 6.19 X 4.02 MM
GRADING RESULTS
Carat Weight 1.98 CARAT
Color Grade D
Clarity Grade VS 1



ADDITIONAL GRADING INFORMATION

Polish EXCELLENT
Symmetry EXCELLENT
Fluorescence NONE
Inscription(s) IGI LG655427604
Comments: This Laboratory Grown Diamond was created by Chemical Vapor Deposition (CVD) growth process.
Type IIa



September 30, 2024
IGI Report No LG655427604
CUT CORNERED RECT. MODIFIED BRILLIANT
8.98 X 6.19 X 4.02 MM
1.98 CARAT
D
VS 1
64.9%
49%
Slightly Thick
Pointed
EXCELLENT
EXCELLENT
NONE
IGI LG655427604
Comments: This Laboratory Grown Diamond was created by Chemical Vapor Deposition (CVD) growth process.
Type IIa