



ELECTRONIC COPY

LG655429521
Report verification at igi.org



October 3, 2024

IGI Report Number **LG655429521**

Description **LABORATORY GROWN DIAMOND**

Shape and Cutting Style **ROUND BRILLIANT**

Measurements **6.60 - 6.66 X 4.07 MM**

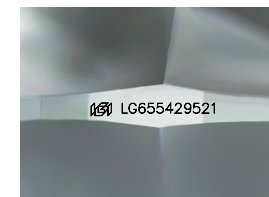
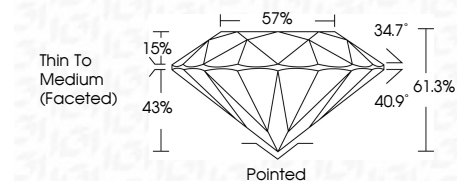
GRADING RESULTS

Carat Weight **1.10 CARAT**

Color Grade **D**

Clarity Grade **VVS 2**

Cut Grade **IDEAL**



Sample Image Used

ADDITIONAL GRADING INFORMATION

Polish **EXCELLENT**

Symmetry **EXCELLENT**

Fluorescence **NONE**

Inscription(s) **IGI LG655429521**

Comments: HEARTS & ARROWS
As Grown - No indication of post-growth treatment.
This Laboratory Grown Diamond was created by High Pressure High Temperature (HPHT) growth process.
Type II

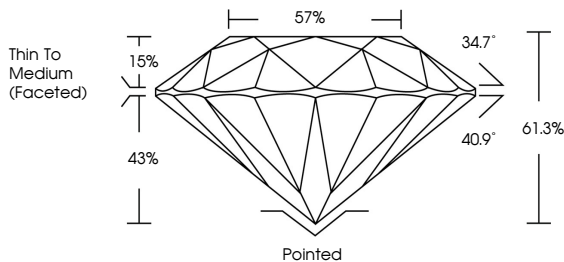


October 3, 2024	IGI Report No LG655429521	1.10 CARAT	D
ROUND BRILLIANT	6.60 - 6.66 X 4.07 MM	VVS 2	IDEAL
Carat Weight	Color Grade	Clarity Grade	Depth
6.60 - 6.66 X 4.07 MM	D	VVS 2	61.3%
Color Grade	Cut Grade	Table	57%
D	IDEAL	43%	Thin To Medium (Faceted)
Clarity Grade	Depth	Crown	Pointed
VVS 2	61.3%	EXCELLENT	EXCELLENT
Depth	Table	Symmetry	EXCELLENT
61.3%	57%	Fluorescence	NONE
Thin To Medium (Faceted)	Crown	Inscriptions(s)	IGI LG655429521
Pointed	EXCELLENT	Comments:	HEARTS & ARROWS
EXCELLENT	EXCELLENT	As Grown - No indication of post-growth treatment.	This Laboratory Grown Diamond was created by High Pressure High Temperature (HPHT) growth process.
EXCELLENT	NONE	Type II	
NONE	IGI LG655429521		

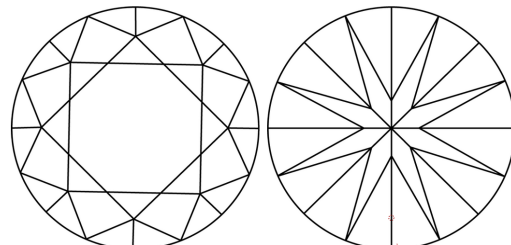


© IGI 2020, International Gemological Institute FD - 10 20

PROPORTIONS

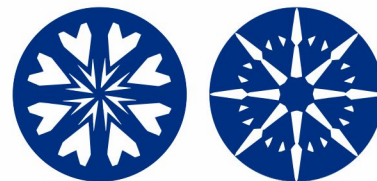


CLARITY CHARACTERISTICS



KEY TO SYMBOLS

Red symbols indicate internal characteristics.
Green symbols indicate external characteristics.



COLOR

D	E	F	G	H	I	J	Faint	Very Light	Light
---	---	---	---	---	---	---	-------	------------	-------

CLARITY

IF	VVS ¹⁻²	VS ¹⁻²	SI ¹⁻²	I ¹⁻³
Internally Flawless	Very Very Slightly Included	Very Slightly Included	Slightly Included	Included