



**ELECTRONIC COPY**

## LABORATORY GROWN DIAMOND REPORT

October 11, 2024	
IGI Report Number	LG655431357
Description	LABORATORY GROWN DIAMOND
Shape and Cutting Style	EMERALD CUT
Measurements	8.49 X 6.10 X 4.13 MM

## GRADING RESULTS

Carat Weight	2.05 CARATS
Color Grade	F
Clarity Grade	VS 1

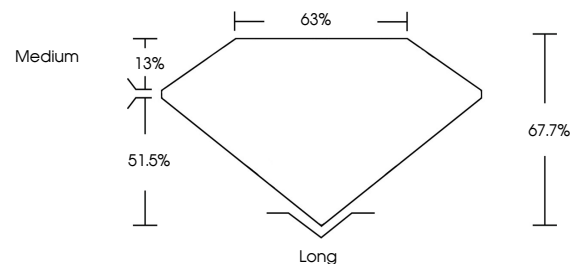
### ADDITIONAL GRADING INFORMATION

Polish	EXCELLENT
Symmetry	EXCELLENT
Fluorescence	NONE
Inscription(s)	15 LG655431357

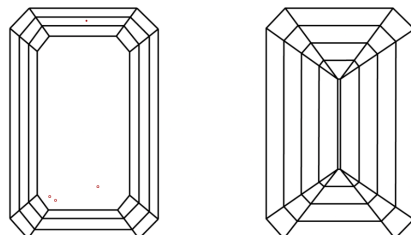
Comments: This Laboratory Grown Diamond was created by Chemical Vapor Deposition (CVD) growth process.  
Type IIa

LG655431357  
Report verification at [lgi.org](https://lgi.org)

## PROPORTIONS

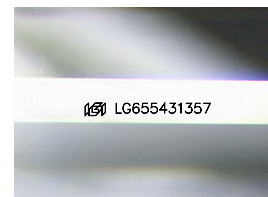


## CLARITY CHARACTERISTICS



### KEY TO SYMBOLS

Red symbols indicate internal characteristics.  
Green symbols indicate external characteristics.



Sample Image Used

**COLOR**

D E F G H I J Faint Very Light Light

## CLARITY

IF	VVS <sup>1-2</sup>	VS <sup>1-2</sup>	SI <sup>1-2</sup>	I <sup>1-3</sup>
Internally Flawless	Very Very Slightly Included	Very Slightly Included	Slightly Included	Included



© IGI 2020, International Gemological Institute

FD - 10 20

**www.igi.org**

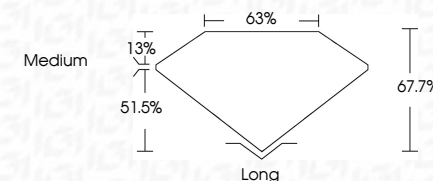
## LABORATORY GROWN DIAMOND REPORT



October 11, 2024	
IGI Report Number	LG655431357
Description	LABORATORY GROWN DIAMOND
Shape and Cutting Style	EMERALD CUT
Measurements	8.49 X 6.10 X 4.13 MM

## GRADING RESULTS

Carat Weight	2.05 CARATS
Color Grade	F
Clarity Grade	VS 1



### ADDITIONAL GRADING INFORMATION

Polish	EXCELLENT
Symmetry	EXCELLENT
Fluorescence	NONE
Inscription(s)	
Comments: This Laboratory Grown Diamond was created by Chemical Vapor Deposition (CVD) growth process.	
Type IIa	



October 11, 2024  
 CGI Report No LG655431357  
 EMERALD CITT

3.49 X 6.10 X 4.13 MM	2.05 CARATS	F	VS 1	67.7%	69%	Medium	Long	EXCELLENT	EXCELLENT	NONE	100% (GIA5563197)
Carat Weight			Clarity Grade	Depth	Table	Girdle	Polish	Symmetry	Fluorescence	Comments(s)	

**Comments:**  
This Laboratory Grown Diamond was  
created by Chemical Vapor Deposition  
(CVD) growth process.