



ELECTRONIC COPY

LG655436055 Report verification at igi.org

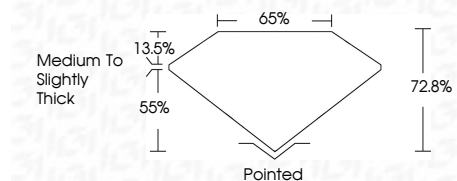


October 14, 2024 IGI Report Number LG655436055 Description LABORATORY GROWN DIAMOND

Shape and Cutting Style CUT CORNERED RECTANGULAR MODIFIED BRILLIANT

Measurements 10.06 X 6.94 X 5.05 MM

GRADING RESULTS Carat Weight 3.01 CARATS Color Grade D Clarity Grade VS 1



ADDITIONAL GRADING INFORMATION Polish EXCELLENT Symmetry EXCELLENT Fluorescence NONE Inscription(s) IGI LG655436055 Comments: This Laboratory Grown Diamond was created by Chemical Vapor Deposition (CVD) growth process. Type IIa



October 14, 2024 IGI Report No LG655436055 CUT CORNERED RECT. MODIFIED BRILLIANT 10.06 X 6.94 X 5.05 MM 3.01 CARATS D VS 1 72.8% 65% Medium to Slightly Thick Pointed EXCELLENT EXCELLENT NONE NONE IGI LG655436055 Comments: This Laboratory Grown Diamond was created by Chemical Vapor Deposition (CVD) growth process. Type IIa

LABORATORY GROWN DIAMOND REPORT

October 14, 2024 IGI Report Number LG655436055 Description LABORATORY GROWN DIAMOND Shape and Cutting Style CUT CORNERED RECTANGULAR MODIFIED BRILLIANT Measurements 10.06 X 6.94 X 5.05 MM

GRADING RESULTS

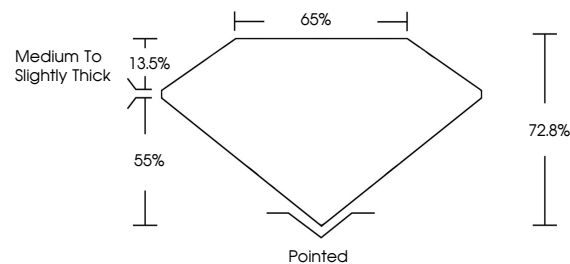
Carat Weight 3.01 CARATS Color Grade D Clarity Grade VS 1

ADDITIONAL GRADING INFORMATION

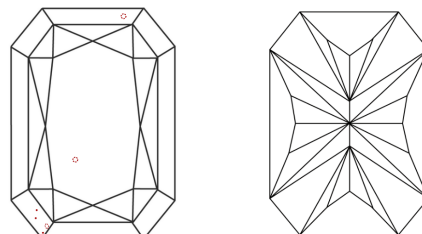
Polish EXCELLENT Symmetry EXCELLENT Fluorescence NONE Inscription(s) IGI LG655436055

Comments: This Laboratory Grown Diamond was created by Chemical Vapor Deposition (CVD) growth process. Type IIa

PROPORTIONS

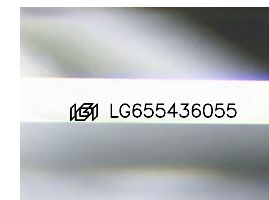


CLARITY CHARACTERISTICS



KEY TO SYMBOLS

Red symbols indicate internal characteristics. Green symbols indicate external characteristics.



Sample Image Used

COLOR

D E F G H I J Faint Very Light Light

CLARITY

IF VS 1-2 VS 1-2 SI 1-2 I 1-3 Internally Flawless Very Very Slightly Included Very Slightly Included Slightly Included Included

