



**ELECTRONIC COPY**

LG655441554  
Report verification at [igi.org](http://igi.org)



October 3, 2024

IGI Report Number **LG655441554**

Description **LABORATORY GROWN DIAMOND**

Shape and Cutting Style **ROUND BRILLIANT**

Measurements **7.55 - 7.56 X 4.61 MM**

**GRADING RESULTS**

Carat Weight **1.60 CARAT**

Color Grade **I**

Clarity Grade **VS 1**

Cut Grade **IDEAL**

October 3, 2024  
IGI Report Number **LG655441554**  
Description **LABORATORY GROWN DIAMOND**  
Shape and Cutting Style **ROUND BRILLIANT**  
Measurements **7.55 - 7.56 X 4.61 MM**

**GRADING RESULTS**

Carat Weight **1.60 CARAT**

Color Grade **I**

Clarity Grade **VS 1**

Cut Grade **IDEAL**

**ADDITIONAL GRADING INFORMATION**

Polish **EXCELLENT**

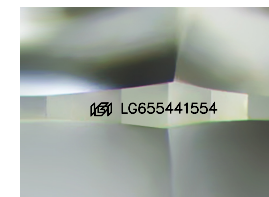
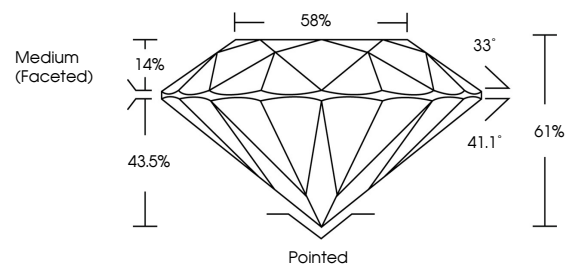
Symmetry **EXCELLENT**

Fluorescence **NONE**

Inscription(s) **LG655441554**

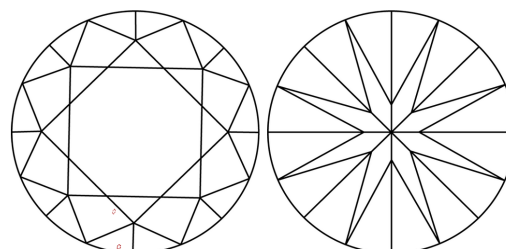
Comments: This Laboratory Grown Diamond was created by Chemical Vapor Deposition (CVD) growth process.  
Type IIa

**PROPORTIONS**



Sample Image Used

**CLARITY CHARACTERISTICS**



**KEY TO SYMBOLS**

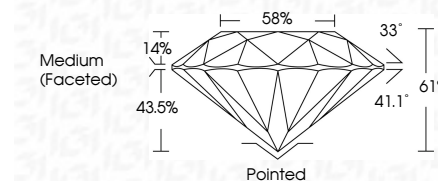
Red symbols indicate internal characteristics.  
Green symbols indicate external characteristics.

**COLOR**

D E F G H I J Faint Very Light Light

**CLARITY**

IF	VS <sup>1-2</sup>	VS <sup>1-2</sup>	SI <sup>1-2</sup>	I <sup>1-3</sup>
Internally Flawless	Very Very Slightly Included	Very Slightly Included	Slightly Included	Included



**ADDITIONAL GRADING INFORMATION**

Polish **EXCELLENT**

Symmetry **EXCELLENT**

Fluorescence **NONE**

Inscription(s) **LG655441554**

Comments: This Laboratory Grown Diamond was created by Chemical Vapor Deposition (CVD) growth process.  
Type IIa



October 3, 2024  
IGI Report No **LG655441554**  
**ROUND BRILLIANT**

**7.55 - 7.56 X 4.61 MM**

Carat Weight **1.60 CARAT**

Color Grade **I**

Clarity Grade **VS 1**

Cut Grade **IDEAL**

Depth **43.5%**

Table **14%**

Girdle **Medium (Faceted)**

Culet **Pointed**

Polish **EXCELLENT**

Symmetry **EXCELLENT**

Fluorescence **NONE**

Inscription(s) **LG655441554**

Comments: This Laboratory Grown Diamond was created by Chemical Vapor Deposition (CVD) growth process.  
Type IIa